

# NSD3 Rabbit Monoclonal Antibody



CAB12342

## Product Information

### Size:

20uL, 50uL, 100uL, 200uL

### Observed MW:

80-100KDa/200KDa

### Calculated MW:

161kDa

### Applications:

WB

### Reactivity:

Human, Mouse, Rat

## Protein Background

This gene is related to the Wolf-Hirschhorn syndrome candidate-1 gene and encodes a protein with PWWP (proline-tryptophan-tryptophan-proline) domains. This protein methylates histone H3 at lysine residues 4 and 27, which represses gene transcription. Two alternatively spliced variants have been described. [provided by RefSeq, May 2015]

## Immunogen information

### Gene ID:

54904

### Uniprot

Q9BZ95

### Synonyms:

KMT3F; KMT3G; WHISTLE; WHSC1L1; pp14328

## Antibody Information

### Recommended dilutions:

WB 1:500 - 1:2000

### Source:

Rabbit

### Isotype:

IgG

### Purification:

Affinity purification

### Immunogen:

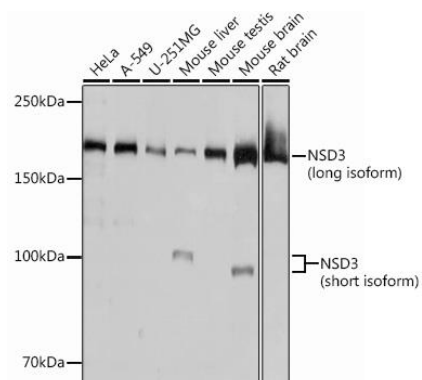
A synthesized peptide derived from human NSD3

### Storage:

Store at -20°C. Avoid freeze / thaw cycles. Buffer: PBS with 0.02% sodium azide, 0.05% BSA, 50% glycerol, pH7.3.

## Product Images

---



Western blot - NSD3 Rabbit mAb (CAB12342)