

PIWIL1 Rabbit Polyclonal Antibody



CAB12349

Product Information

Size:

20uL, 50uL, 100uL, 200uL

Observed MW:

Calculated MW:

95kDa/98kDa

Applications:

IF

Reactivity:

Human

Protein Background

This gene encodes a member of the PIWI subfamily of Argonaute proteins, evolutionarily conserved proteins containing both PAZ and Piwi motifs that play important roles in stem cell self-renewal, RNA silencing, and translational regulation in diverse organisms. The encoded protein may play a role as an intrinsic regulator of the self-renewal capacity of germline and hematopoietic stem cells. Alternatively spliced transcript variants encoding different isoforms have been found for this gene.

Immunogen information

Gene ID:

57749

Uniprot

Q9JMB7

Synonyms:

PIWIL1; CT80.1; HIWI; MIWI; PIWI

Antibody Information

Recommended dilutions:

IF 1:50 - 1:200

Source:

Rabbit

Isotype:

IgG

Purification:

Affinity purification

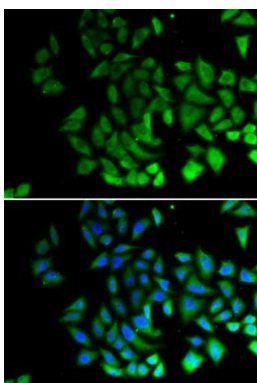
Immunogen:

Recombinant protein of mouse PIWIL1

Storage:

Store at -20°C. Avoid freeze / thaw cycles. Buffer: PBS with 0.02% sodium azide, 50% glycerol, pH7.3.

Product Images



Immunofluorescence analysis of U2OS cells using PIWIL1 antibody (CAB12349). Blue: DAPI for nuclear staining.