

MYBPC3 Rabbit Polyclonal Antibody



CAB12351

Product Information

Size:

20uL, 50uL, 100uL, 200uL

Observed MW:

170kDa

Calculated MW:

140kDa

Applications:

WB IHC

Reactivity:

Mouse, Rat

Protein Background

MYBPC3 encodes the cardiac isoform of myosin-binding protein C. Myosin-binding protein C is a myosin-associated protein found in the cross-bridge-bearing zone (C region) of A bands in striated muscle. MYBPC3, the cardiac isoform, is expressed exclusively in heart muscle. Regulatory phosphorylation of the cardiac isoform in vivo by cAMP-dependent protein kinase (PKA) upon adrenergic stimulation may be linked to modulation of cardiac contraction. Mutations in MYBPC3 are one cause of familial hypertrophic cardiomyopathy.

Immunogen information

Gene ID:

4607

Uniprot

Q14896

Synonyms:

MYBPC3; CMD1MM; CMH4; FHC; LVNC10; MYBP-C; cardiac

Antibody Information

Recommended dilutions:

WB 1:500 - 1:2000 IHC 1:50 - 1:200

Source:

Rabbit

Isotype:

IgG

Purification:

Affinity purification

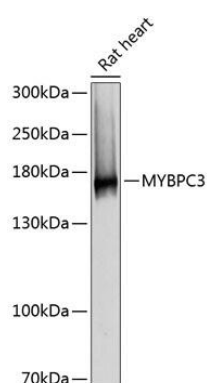
Immunogen:

Recombinant fusion protein containing a sequence corresponding to amino acids 200-400 of human MYBPC3 (NP_000247.2).

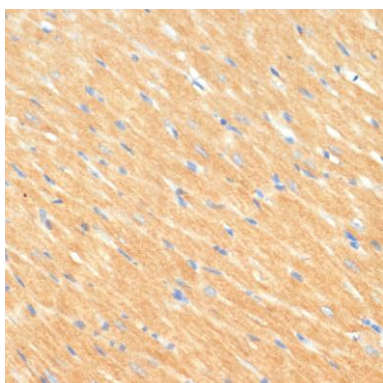
Storage:

Store at -20°C. Avoid freeze / thaw cycles. Buffer: PBS with 0.02% sodium azide, 50% glycerol, pH7.3.

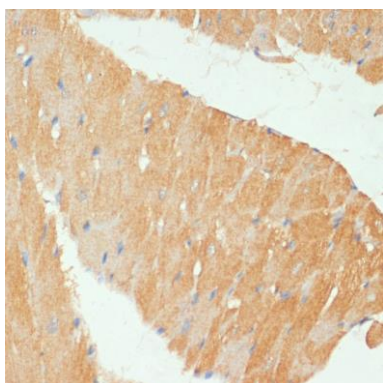
Product Images



Western blot analysis of extracts of rat heart, using MYBPC3 antibody (CAB12351) at 1:3000 dilution. Secondary antibody: HRP Goat Anti-Rabbit IgG (H+L) (CABS014) at 1:10000 dilution. Lysates/proteins: 25ug per lane. Blocking buffer: 3% nonfat dry milk in TBST. Detection: ECL Basic Kit (CABM00020). Exposure time: 1s.



Immunohistochemistry of paraffin-embedded rat heart using MYBPC3 antibody (CAB12351) at dilution of 1:100 (40x lens).



Immunohistochemistry of paraffin-embedded mouse heart using MYBPC3 antibody (CAB12351) at dilution of 1:100 (40x lens).