

KMT2A Rabbit Polyclonal Antibody



CAB12353

Product Information

Size:

20uL, 50uL, 100uL, 200uL

Observed MW:

190kDa

Calculated MW:

427kDa/431kDa/432kDa

Applications:

WB IF

Reactivity:

Human, Mouse, Rat

Antibody Information

Recommended dilutions:

WB 1:500 - 1:2000 IF 1:50 - 1:200

Source:

Rabbit

Isotype:

IgG

Purification:

Affinity purification

Protein Background

This gene encodes a transcriptional coactivator that plays an essential role in regulating gene expression during early development and hematopoiesis. The encoded protein contains multiple conserved functional domains. One of these domains, the SET domain, is responsible for its histone H3 lysine 4 (H3K4) methyltransferase activity which mediates chromatin modifications associated with epigenetic transcriptional activation. This protein is processed by the enzyme Taspase 1 into two fragments, MLL-C and MLL-N. These fragments reassociate and further assemble into different multiprotein complexes that regulate the transcription of specific target genes, including many of the HOX genes. Multiple chromosomal translocations involving this gene are the cause of certain acute lymphoid leukemias and acute myeloid leukemias. Alternate splicing results in multiple transcript variants.

Immunogen information

Gene ID:

4297

Uniprot

Q03164

Synonyms:

KMT2A; ALL-1; CXXC7; HRX; HTRX1; MLL; MLL1; MLL1A; TRX1; WDSTS; MLL-AF9; MLL/GAS7; TET1-MLL

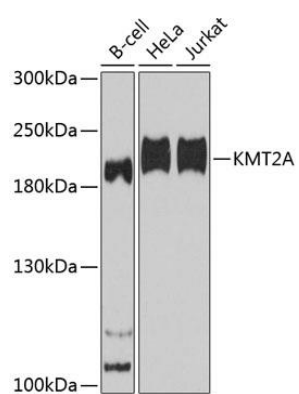
Immunogen:

Recombinant fusion protein containing a sequence corresponding to amino acids 2829-2883 of human KMT2A (NP_005924.2).

Storage:

Store at -20°C. Avoid freeze / thaw cycles. Buffer: PBS with 0.02% sodium azide, 50% glycerol, pH7.3.

Product Images



Western blot - KMT2A Polyclonal Antibody (CAB12353)