

SPTA1 Rabbit Polyclonal Antibody



CAB12355

Product Information

Size:

20uL, 50uL, 100uL, 200uL

Observed MW:

300kDa

Calculated MW:

279kDa/280kDa

Applications:

WB IHC IF

Reactivity:

Human, Mouse, Rat

Protein Background

Spectrin is an actin crosslinking and molecular scaffold protein that links the plasma membrane to the actin cytoskeleton, and functions in the determination of cell shape, arrangement of transmembrane proteins, and organization of organelles. It is a tetramer made up of alpha-beta dimers linked in a head-to-head arrangement. This gene is one member of a family of alpha-spectrin genes. The encoded protein is primarily composed of 22 spectrin repeats which are involved in dimer formation. It forms weaker tetramer interactions than non-erythrocytic alpha spectrin, which may increase the plasma membrane elasticity and deformability of red blood cells. Mutations in this gene result in a variety of hereditary red blood cell disorders, including elliptocytosis type 2, pyropoikilocytosis, and spherocytic hemolytic anemia.

Immunogen information

Gene ID:

6708

Uniprot

P02549

Antibody Information

Recommended dilutions:

WB 1:500 - 1:2000 IHC 1:50
- 1:200 IF 1:50 - 1:200

Source:

Rabbit

Isotype:

IgG

Purification:

Affinity purification

Synonyms:

SPTA1; EL2; HPP; HS3; SPH3; SPTA

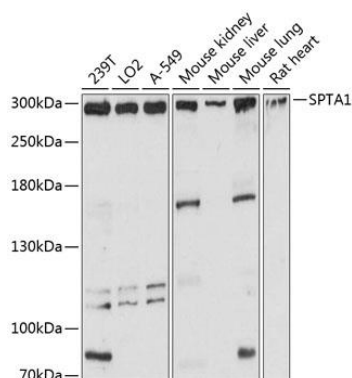
Immunogen:

Recombinant fusion protein containing a sequence corresponding to amino acids 940-1160 of human SPTA1 (NP_003117.2).

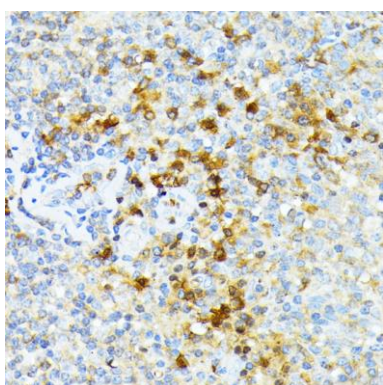
Storage:

Store at -20°C. Avoid freeze / thaw cycles. Buffer: PBS with 0.02% sodium azide, 50% glycerol, pH7.3.

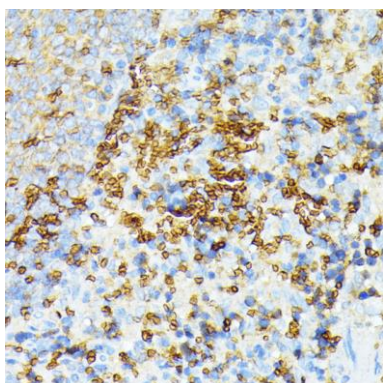
Product Images



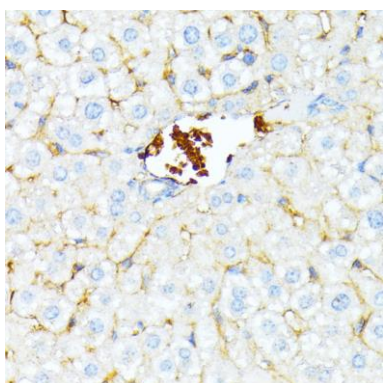
Western blot analysis of extracts of various cell lines, using SPTA1 antibody (CAB12355) at 1:3000 dilution. Secondary antibody: HRP Goat Anti-Rabbit IgG (H+L) (CABS014) at 1:10000 dilution. Lysates/proteins: 25ug per lane. Blocking buffer: 3% nonfat dry milk in TBST. Detection: ECL Basic Kit (CABM00020). Exposure time: 10s.



Immunohistochemistry of paraffin-embedded human tonsil using SPTA1 antibody (CAB12355) at dilution of 1:100 (40x lens).



Immunohistochemistry of paraffin-embedded rat spleen using SPTA1 antibody (CAB12355) at dilution of 1:100 (40x lens).



Immunohistochemistry of paraffin-embedded mouse liver using SPTA1 antibody (CAB12355) at dilution of 1:100 (40x lens).