

UBA1 Rabbit Polyclonal Antibody



CAB12359

Product Information

Size:

20uL, 50uL, 100uL, 200uL

Observed MW:

121kDa

Calculated MW:

113kDa/117kDa

Applications:

WB IHC IF

Reactivity:

Human, Mouse, Rat

Antibody Information

Recommended dilutions:

WB 1:500 - 1:2000 IHC 1:50
- 1:200 IF 1:50 - 1:200

Source:

Rabbit

Isotype:

IgG

Purification:

Affinity purification

Protein Background

The protein encoded by this gene catalyzes the first step in ubiquitin conjugation to mark cellular proteins for degradation. This gene complements an X-linked mouse temperature-sensitive defect in DNA synthesis, and thus may function in DNA repair. It is part of a gene cluster on chromosome Xp11.23. Alternatively spliced transcript variants that encode the same protein have been described.

Immunogen information

Gene ID:

7317

Uniprot

P22314

Synonyms:

UBA1; A1S9; A1S9T; A1ST; AMCX1; CFAP124; GXP1; POC20;
SMAX2; UBA1A; UBE1; UBE1X

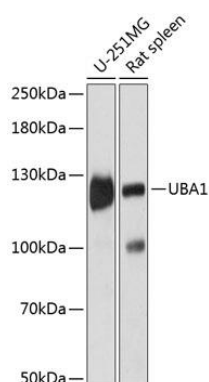
Immunogen:

Recombinant fusion protein containing a sequence corresponding to amino acids 300-600 of human UBA1 (NP_695012.1).

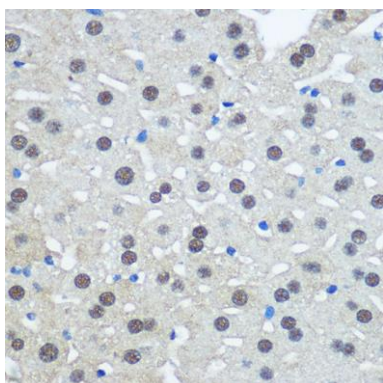
Storage:

Store at -20°C. Avoid freeze / thaw cycles. Buffer: PBS with 0.02% sodium azide, 50% glycerol, pH7.3.

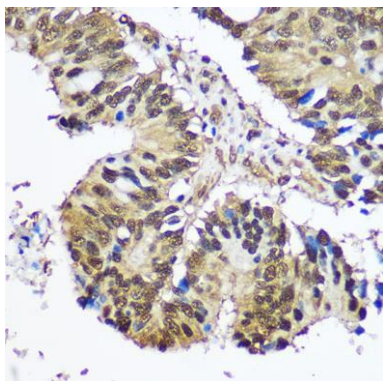
Product Images



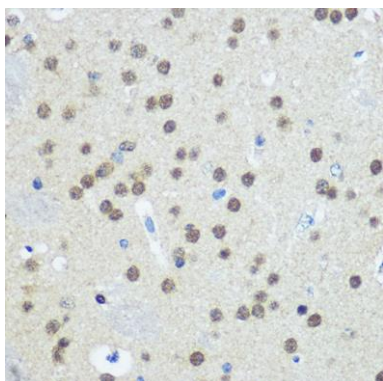
Western blot analysis of extracts of various cell lines, using UBA1 antibody (CAB12359) at 1:3000 dilution. Secondary antibody: HRP Goat Anti-Rabbit IgG (H+L) (CABS014) at 1:10000 dilution. Lysates/proteins: 25ug per lane. Blocking buffer: 3% nonfat dry milk in TBST. Detection: ECL Basic Kit (CABM00020). Exposure time: 5s.



Immunohistochemistry of paraffin-embedded Rat liver using UBA1 antibody (CAB12359) at dilution of 1:100 (40x lens).



Immunohistochemistry of paraffin-embedded Human colon carcinoma using UBA1 antibody (CAB12359) at dilution of 1:100 (40x lens).



Immunohistochemistry of paraffin-embedded Mouse brain using UBA1 antibody (CAB12359) at dilution of 1:100 (40x lens).