

PALLD Rabbit Polyclonal Antibody



CAB12362

Product Information

Size:

20uL, 50uL, 100uL, 200uL

Observed MW:

150kDa

Calculated MW:

42kDa/58kDa/73kDa/85-150kDa

Applications:

WB IHC IF IP

Reactivity:

Human, Mouse, Rat

Protein Background

This gene encodes a cytoskeletal protein that is required for organizing the actin cytoskeleton. The protein is a component of actin-containing microfilaments, and it is involved in the control of cell shape, adhesion, and contraction. Polymorphisms in this gene are associated with a susceptibility to pancreatic cancer type 1, and also with a risk for myocardial infarction. Alternative splicing results in multiple transcript variants.

Immunogen information

Gene ID:

23022

Uniprot

Q8WX93

Synonyms:

PALLD; CGI-151; CGI151; MYN; PNCA1; SIH002; palladin

Antibody Information

Recommended dilutions:

WB 1:500 - 1:2000 IHC 1:50
- 1:200 IF 1:50 - 1:200 IP
1:50 - 1:200

Source:

Rabbit

Isotype:

IgG

Purification:

Affinity purification

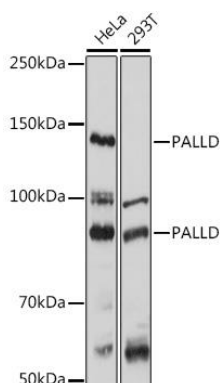
Immunogen:

Recombinant fusion protein containing a sequence corresponding to amino acids 383-672 of human PALLD (NP_001159582.1).

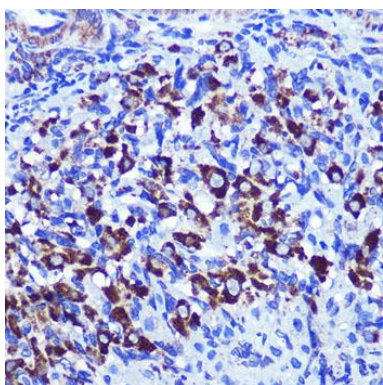
Storage:

Store at -20°C. Avoid freeze / thaw cycles. Buffer: PBS with 0.02% sodium azide, 50% glycerol, pH7.3.

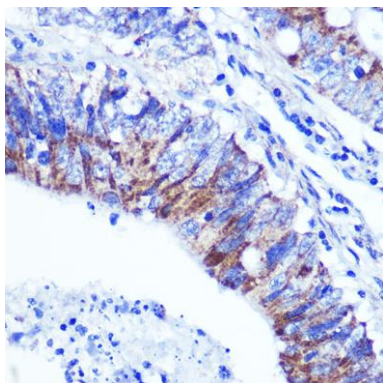
Product Images



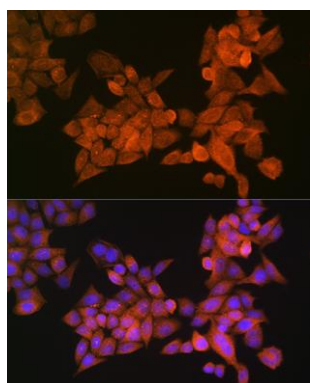
Western blot analysis of extracts of various cell lines, using PALLD antibody (CAB12362) at 1:1000 dilution. Secondary antibody: HRP Goat Anti-Rabbit IgG (H+L) (CABS014) at 1:10000 dilution. Lysates/proteins: 25ug per lane. Blocking buffer: 3% nonfat dry milk in TBST. Detection: ECL Basic Kit (CABM00020). Exposure time: 30s.



Immunohistochemistry of paraffin-embedded rat ovary using PALLD Rabbit pAb (CAB12362) at dilution of 1:100 (40x lens).



Immunohistochemistry of paraffin-embedded human colon carcinoma using PALLD Rabbit pAb (CAB12362) at dilution of 1:100 (40x lens).



Immunofluorescence analysis of HeLa cells using PALLD Rabbit pAb (CAB12362) at dilution of 1:100 (40x lens). Blue: DAPI for nuclear staining.