

# CPSF3 Rabbit Polyclonal Antibody



CAB12368

---

## Product Information

### Size:

20uL, 50uL, 100uL, 200uL

### Observed MW:

73kDa

### Calculated MW:

77kDa

### Applications:

WB

### Reactivity:

Mouse

## Protein Background

This gene encodes a member of the metallo-beta-lactamase family. The encoded protein is a 73kDa subunit of the cleavage and polyadenylation specificity factor and functions as an endonuclease that recognizes the pre-mRNA 3'-cleavage site AAUAAA prior to polyadenylation. It also cleaves after the pre-mRNA sequence ACCCA during histone 3'-end pre-mRNA processing.

## Immunogen information

### Gene ID:

51692

### Uniprot

Q9UKF6

### Synonyms:

CPSF3; CPSF-73; CPSF73

## Antibody Information

### Recommended dilutions:

WB 1:500 - 1:2000

### Source:

Rabbit

### Isotype:

IgG

### Purification:

Affinity purification

### Immunogen:

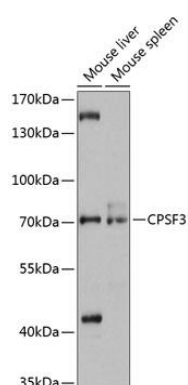
Recombinant fusion protein containing a sequence corresponding to amino acids 435-684 of human CPSF3 (NP\_057291.1).

### Storage:

Store at -20°C. Avoid freeze / thaw cycles. Buffer: PBS with 0.02% sodium azide, 50% glycerol, pH7.3.

## Product Images

---



Western blot analysis of extracts of various cell lines, using CPSF3 antibody (CAB12368) at 1:3000 dilution. Secondary antibody: HRP Goat Anti-Rabbit IgG (H+L) (CABS014) at 1:10000 dilution. Lysates/proteins: 25ug per lane. Blocking buffer: 3% nonfat dry milk in TBST. Detection: ECL Basic Kit (CABM00020). Exposure time: 10s.