

# AGRB2 Rabbit Polyclonal Antibody



CAB12380

## Product Information

### Size:

20uL, 50uL, 100uL, 200uL

### Observed MW:

173kDa

### Calculated MW:

169kDa/171kDa/172kDa

### Applications:

WB

### Reactivity:

Mouse, Rat

## Protein Background

This gene encodes a seven-span transmembrane protein that is thought to be a member of the secretin receptor family. The encoded protein is a brain-specific inhibitor of angiogenesis. The mature peptide may be further cleaved into additional products (PMID:20367554). Alternative splicing results in multiple transcript variants.

## Immunogen information

### Gene ID:

576

### Uniprot

O60241

### Synonyms:

ADGRB2; BAI2; AGRB2

## Antibody Information

### Recommended dilutions:

WB 1:500 - 1:2000

### Source:

Rabbit

### Isotype:

IgG

### Purification:

Affinity purification

### Immunogen:

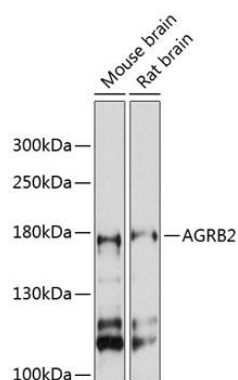
A synthetic peptide corresponding to a sequence within amino acids 700-800 of human AGRB2 (NP\_001281264.1).

### Storage:

Store at -20°C. Avoid freeze / thaw cycles. Buffer: PBS with 0.02% sodium azide, 50% glycerol, pH7.3.

## Product Images

---



Western blot analysis of extracts of various cell lines, using AGRB2 antibody (CAB12380) at 1:3000 dilution. Secondary antibody: HRP Goat Anti-Rabbit IgG (H+L) (CABS014) at 1:10000 dilution. Lysates/proteins: 25ug per lane. Blocking buffer: 3% nonfat dry milk in TBST. Detection: ECL Basic Kit (CABM00020). Exposure time: 30s.