

# F2 Rabbit Polyclonal Antibody



CAB12382

## Product Information

### Size:

20uL, 50uL, 100uL, 200uL

### Observed MW:

75KDa

### Calculated MW:

70kDa

### Applications:

WB IF

### Reactivity:

Human, Mouse, Rat

## Antibody Information

### Recommended dilutions:

WB 1:500 - 1:2000 IF 1:50 - 1:200

### Source:

Rabbit

### Isotype:

IgG

### Purification:

Affinity purification

## Protein Background

Coagulation factor II is proteolytically cleaved to form thrombin in the first step of the coagulation cascade which ultimately results in the stemming of blood loss. F2 also plays a role in maintaining vascular integrity during development and postnatal life. Peptides derived from the C-terminus of this protein have antimicrobial activity against *E. coli* and *P. aeruginosa*. Mutations in F2 lead to various forms of thrombosis and dysprothrombinemia. Alternative splicing results in multiple transcript variants.

## Immunogen information

### Gene ID:

2147

### Uniprot

P00734

### Synonyms:

F2; PT; RPRGL2; THPH1

### Immunogen:

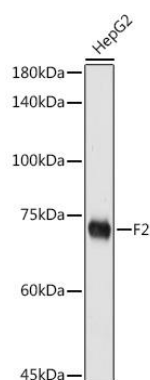
Recombinant fusion protein containing a sequence corresponding to amino acids 75-280 of human F2 (NP\_000497.1).

### Storage:

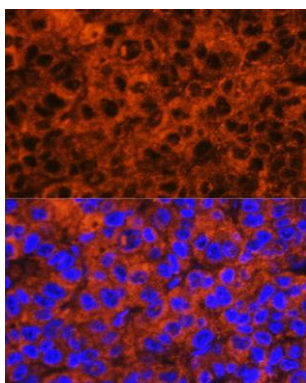
Store at -20°C. Avoid freeze / thaw cycles. Buffer: PBS with 0.02% sodium azide, 50% glycerol, pH7.3.

## Product Images

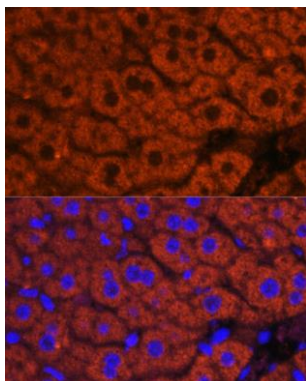
---



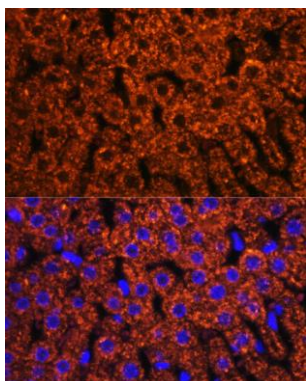
Western blot analysis of extracts of HepG2 cells, using F2 antibody (CAB12382) at 1:500 dilution. Secondary antibody: HRP Goat Anti-Rabbit IgG (H+L) (CABS014) at 1:10000 dilution. Lysates/proteins: 25ug per lane. Blocking buffer: 3% nonfat dry milk in TBST. Detection: ECL Basic Kit (CABM00020). Exposure time: 180s.



Immunofluorescence analysis of human liver cancer using F2 antibody (CAB12382) at dilution of 1:100. Blue: DAPI for nuclear staining.



Immunofluorescence analysis of mouse liver using F2 antibody (CAB12382) at dilution of 1:100. Blue: DAPI for nuclear staining.



Immunofluorescence analysis of rat liver using F2 antibody (CAB12382) at dilution of 1:100. Blue: DAPI for nuclear staining.