

# CRLS1 Rabbit Polyclonal Antibody



CAB12388

---

## Product Information

### Size:

20uL, 50uL, 100uL, 200uL

### Observed MW:

36kDa

### Calculated MW:

22kDa/32kDa

### Applications:

WB

### Reactivity:

Mouse

## Protein Background

This gene encodes a member of the CDP-alcohol phosphatidyltransferase class-I family of proteins. The encoded enzyme catalyzes the synthesis of cardiolipin, a phospholipid component of mitochondrial membranes that is critical for mitochondrial function.

## Immunogen information

### Gene ID:

54675

### Uniprot

Q9UJA2

### Synonyms:

CRLS1; C20orf155; CLS; CLS1; GCD10; dJ967N21.6

## Antibody Information

### Recommended dilutions:

WB 1:200 - 1:500

### Source:

Rabbit

### Isotype:

IgG

### Purification:

Affinity purification

### Immunogen:

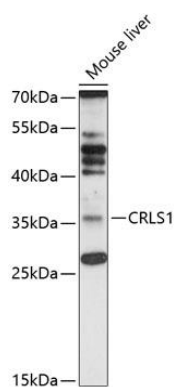
Recombinant fusion protein containing a sequence corresponding to amino acids 1-110 of human CRLS1 (NP\_061968.1).

### Storage:

Store at -20°C. Avoid freeze / thaw cycles. Buffer: PBS with 0.02% sodium azide, 50% glycerol, pH7.3.

## Product Images

---



Western blot analysis of extracts of mouse liver, using CRLS1 antibody (CAB12388) at 1:1000 dilution. Secondary antibody: HRP Goat Anti-Rabbit IgG (H+L) (CABS014) at 1:10000 dilution. Lysates/proteins: 25ug per lane. Blocking buffer: 3% nonfat dry milk in TBST. Detection: ECL Enhanced Kit (CABM00021). Exposure time: 60s.