

Iba1 Rabbit Polyclonal Antibody



CAB12391

Product Information

Size:

20uL, 50uL, 100uL, 200uL

Observed MW:

15KDa

Calculated MW:

10kDa/14kDa/16kDa

Applications:

WB IHC IF

Reactivity:

Human, Mouse, Rat

Protein Background

This gene encodes a protein that binds actin and calcium. This gene is induced by cytokines and interferon and may promote macrophage activation and growth of vascular smooth muscle cells and T-lymphocytes. Polymorphisms in this gene may be associated with systemic sclerosis. Alternative splicing results in multiple transcript variants, but the full-length and coding nature of some of these variants is not certain.

Immunogen information

Gene ID:

199

Uniprot

P55008

Synonyms:

AIF1; AIF-1; IBA1; IRT-1; IRT1; Iba1

Antibody Information

Recommended dilutions:

WB 1:500 - 1:2000 IHC 1:50
- 1:100 IF 1:50 - 1:100

Source:

Rabbit

Isotype:

IgG

Purification:

Affinity purification

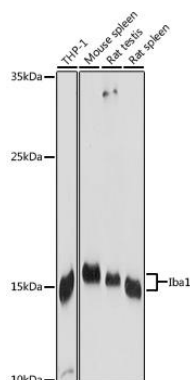
Immunogen:

Recombinant fusion protein containing a sequence corresponding to amino acids 1-147 of human Iba1 (NP_001614.3).

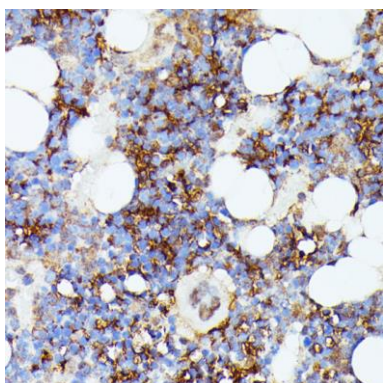
Storage:

Store at -20°C. Avoid freeze / thaw cycles. Buffer: PBS with 0.02% sodium azide, 50% glycerol, pH7.3.

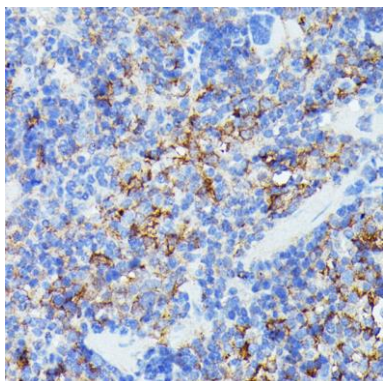
Product Images



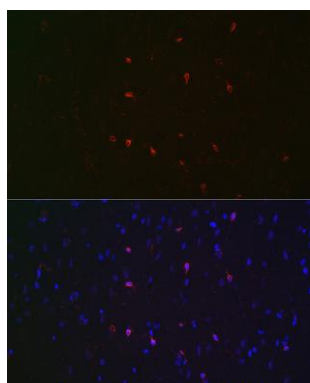
Western blot analysis of extracts of various cell lines, using Iba1 Rabbit pAb (CAB12391) at 1:1000 dilution. Secondary antibody: HRP Goat Anti-Rabbit IgG (H+L) (CABS014) at 1:10000 dilution. Lysates/proteins: 25ug per lane. Blocking buffer: 3% nonfat dry milk in TBST. Detection: ECL Basic Kit (CABM00020). Exposure time: 120s.



Immunohistochemistry of paraffin-embedded rat bone marrow using Iba1 antibody (CAB12391) at dilution of 1:100 (40x lens).



Immunohistochemistry of paraffin-embedded mouse spleen using Iba1 antibody (CAB12391) at dilution of 1:100 (40x lens).



Immunofluorescence analysis of rat brain using Iba1 Rabbit pAb (CAB12391) at dilution of 1:100 (40x lens). Blue: DAPI for nuclear staining.