

# [KO Validated] beta 2 Microglobulin Rabbit Polyclonal Antibody

CAB12404



## Product Information

### Size:

20uL, 50uL, 100uL, 200uL

### Observed MW:

12kDa

### Calculated MW:

13kDa

### Applications:

WB IHC IP

### Reactivity:

Human, Mouse, Rat

## Protein Background

This gene encodes a serum protein found in association with the major histocompatibility complex (MHC) class I heavy chain on the surface of nearly all nucleated cells. The protein has a predominantly beta-pleated sheet structure that can form amyloid fibrils in some pathological conditions. The encoded antimicrobial protein displays antibacterial activity in amniotic fluid. A mutation in this gene has been shown to result in hypercatabolic hypoproteinemia.

## Immunogen information

### Gene ID:

567

### Uniprot

P61769

### Synonyms:

B2M; IMD43

## Antibody Information

### Recommended dilutions:

WB 1:500 - 1:2000 IHC 1:50  
- 1:200 IP 1:50 - 1:100

### Source:

Rabbit

### Isotype:

IgG

### Purification:

Affinity purification

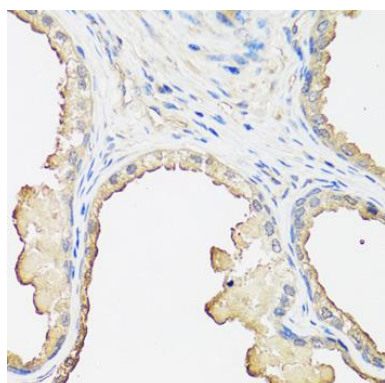
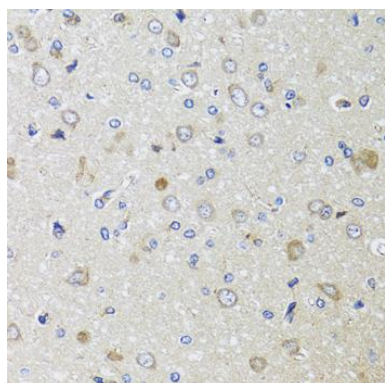
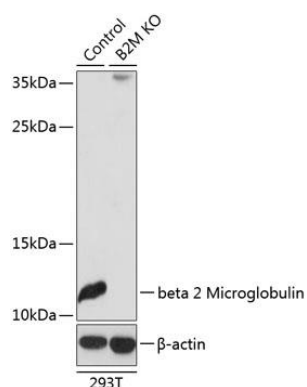
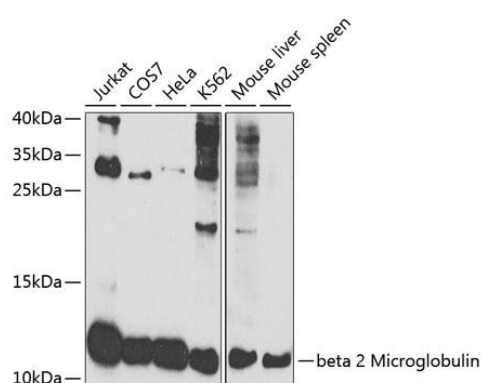
### Immunogen:

Recombinant fusion protein containing a sequence corresponding to amino acids 21-119 of human beta 2 Microglobulin (NP\_004039.1).

### Storage:

Store at -20°C. Avoid freeze / thaw cycles. Buffer: PBS with 0.02% sodium azide, 50% glycerol, pH7.3.

## Product Images



Western blot analysis of extracts of various cell lines, using beta 2 Microglobulin antibody (CAB12404) at 1:1000 dilution. Secondary antibody: HRP Goat Anti-Rabbit IgG (H+L) (CABS014) at 1:10000 dilution. Lysates/proteins: 25ug per lane. Blocking buffer: 3% nonfat dry milk in TBST. Detection: ECL Basic Kit (CABM00020).

Western blot analysis of extracts from normal (control) and beta 2 Microglobulin knockout (KO) 293T cells, using beta 2 Microglobulin antibody (CAB12404) at 1:3000 dilution. Secondary antibody: HRP Goat Anti-Rabbit IgG (H+L) (CABS014) at 1:10000 dilution. Lysates/proteins: 25ug per lane. Blocking buffer: 3% nonfat dry milk in TBST. Detection: ECL Basic Kit (CABM00020). Exposure time: 90s.

Immunohistochemistry of paraffin-embedded rat brain using beta 2 Microglobulin antibody (CAB12404) at dilution of 1:100 (40x lens).

Immunohistochemistry of paraffin-embedded human prostate using beta 2 Microglobulin antibody (CAB12404) at dilution of 1:100 (40x lens).