

Na⁺/K⁺-ATPase Rabbit Polyclonal Antibody



CAB12405

Product Information

Size:

20uL, 50uL, 100uL, 200uL

Observed MW:

113kDa

Calculated MW:

74kDa/109kDa/112kDa/113kDa

Applications:

WB

Reactivity:

Human, Mouse

Antibody Information

Recommended dilutions:

WB 1:500 - 1:2000

Source:

Rabbit

Isotype:

IgG

Purification:

Affinity purification

Protein Background

The protein encoded by this gene belongs to the family of P-type cation transport ATPases, and to the subfamily of Na⁺/K⁺-ATPases. Na⁺/K⁺-ATPase is an integral membrane protein responsible for establishing and maintaining the electrochemical gradients of Na and K ions across the plasma membrane. These gradients are essential for osmoregulation, for sodium-coupled transport of a variety of organic and inorganic molecules, and for electrical excitability of nerve and muscle. This enzyme is composed of two subunits, a large catalytic subunit (alpha) and a smaller glycoprotein subunit (beta). The catalytic subunit of Na⁺/K⁺-ATPase is encoded by multiple genes. This gene encodes an alpha 1 subunit. Multiple transcript variants encoding different isoforms have been found for this gene.

Immunogen information

Gene ID:

476

Uniprot

P05023

Synonyms:

ATP1A1; ATPase Na⁺/K⁺ transporting subunit alpha 1; ATP1A; CMT2DD; HOMGSMR2

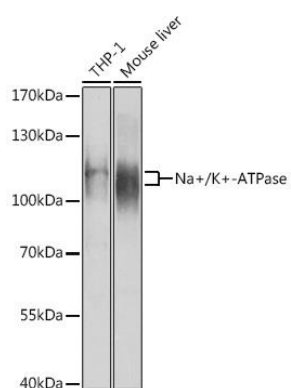
Immunogen:

Recombinant fusion protein containing a sequence corresponding to amino acids 551-850 of human Na⁺/K⁺-ATPase (NP_000692.2).

Storage:

Store at -20°C. Avoid freeze / thaw cycles. Buffer: PBS with 0.02% sodium azide, 50% glycerol, pH7.3.

Product Images



Western blot analysis of extracts of various cell lines, using Na⁺/K⁺-ATPase1 antibody (CAB12405) at 1:1000 dilution. Secondary antibody: HRP Goat Anti-Rabbit IgG (H+L) (CABS014) at 1:10000 dilution. Lysates/proteins: 25ug per lane. Blocking buffer: 3% nonfat dry milk in TBST. Detection: ECL Basic Kit (CABM00020). Exposure time: 15s.