

C1 Inactivator Rabbit Polyclonal Antibody



CAB12407

Product Information

Size:

20uL, 50uL, 100uL, 200uL

Observed MW:

60kDa

Calculated MW:

49kDa/55kDa

Applications:

WB IHC

Reactivity:

Human, Mouse, Rat

Protein Background

This gene encodes a highly glycosylated plasma protein involved in the regulation of the complement cascade. Its protein inhibits activated C1r and C1s of the first complement component and thus regulates complement activation. Deficiency of this protein is associated with hereditary angioneurotic oedema (HANE). Alternative splicing results in multiple transcript variants encoding the same isoform.

Immunogen information

Gene ID:

710

Uniprot

P05155

Synonyms:

SERPING1; C1IN; C1INH; C1NH; HAE1; HAE2

Antibody Information

Recommended dilutions:

WB 1:500 - 1:2000 IHC 1:50
- 1:200

Source:

Rabbit

Isotype:

IgG

Purification:

Affinity purification

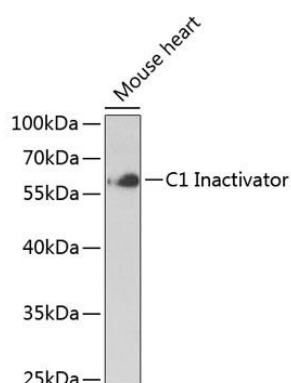
Immunogen:

Recombinant fusion protein containing a sequence corresponding to amino acids 201-500 of human C1 Inactivator (NP_001027466.1).

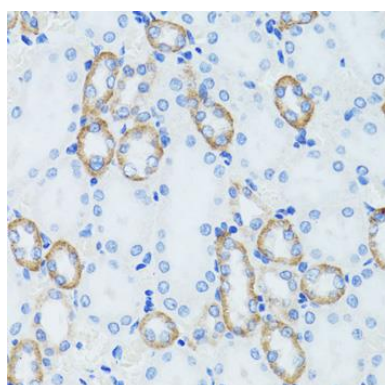
Storage:

Store at -20°C. Avoid freeze / thaw cycles. Buffer: PBS with 0.02% sodium azide, 50% glycerol, pH7.3.

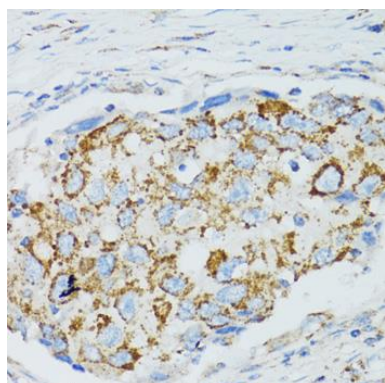
Product Images



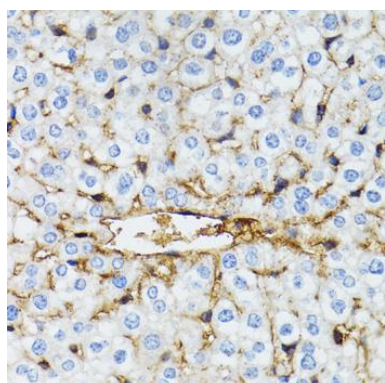
Western blot analysis of extracts of mouse heart, using C1 Inactivator Antibody (CAB12407) at 1:1000 dilution. Secondary antibody: HRP Goat Anti-Rabbit IgG (H+L) (CABS014) at 1:10000 dilution. Lysates/proteins: 25ug per lane. Blocking buffer: 3% nonfat dry milk in TBST.



Immunohistochemistry of paraffin-embedded rat kidney using C1 Inactivator antibody (CAB12407) at dilution of 1:100 (40x lens).



Immunohistochemistry of paraffin-embedded human breast cancer using C1 Inactivator antibody (CAB12407) at dilution of 1:100 (40x lens).



Immunohistochemistry of paraffin-embedded mouse liver using C1 Inactivator antibody (CAB12407) at dilution of 1:100 (40x lens).