

# TOP1 Rabbit Monoclonal Antibody



CAB12409

---

## Product Information

### Size:

20uL, 50uL, 100uL, 200uL

### Observed MW:

100KDa

### Calculated MW:

91kDa

### Applications:

WB IHC IF

### Reactivity:

Human, Mouse, Rat

## Protein Background

This gene encodes a DNA topoisomerase, an enzyme that controls and alters the topologic states of DNA during transcription. This enzyme catalyzes the transient breaking and rejoining of a single strand of DNA which allows the strands to pass through one another, thus altering the topology of DNA. This gene is localized to chromosome 20 and has pseudogenes which reside on chromosomes 1 and 22. [provided by RefSeq, Jul 2008]

## Immunogen information

### Gene ID:

7150

### Uniprot

P11387

### Synonyms:

TOPI

## Antibody Information

### Recommended dilutions:

WB 1:500 - 1:2000 IHC  
1:50 - 1:200 IF 1:50 - 1:200

### Source:

Rabbit

### Isotype:

IgG

### Purification:

Affinity purification

### Immunogen:

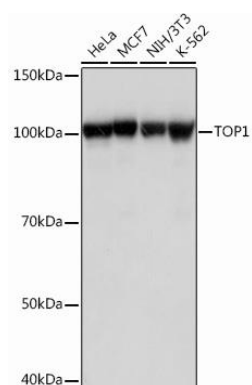
A synthesized peptide derived from human TOP1

### Storage:

Store at -20°C. Avoid freeze / thaw cycles. Buffer: PBS with 0.02% sodium azide, 0.05% BSA, 50% glycerol, pH7.3.

## Product Images

---



Western blot - TOP1 Rabbit mAb (CAB12409)