

# F11R Rabbit Polyclonal Antibody



CAB1241

## Product Information

### Size:

20uL, 50uL, 100uL, 200uL

### Observed MW:

40kDa

### Calculated MW:

27kDa/32kDa

### Applications:

WB IHC IF

### Reactivity:

Human, Mouse, Rat

## Antibody Information

### Recommended dilutions:

WB 1:500 - 1:2000 IHC 1:50  
- 1:200 IF 1:50 - 1:200

### Source:

Rabbit

### Isotype:

IgG

### Purification:

Affinity purification

## Protein Background

Tight junctions represent one mode of cell-to-cell adhesion in epithelial or endothelial cell sheets, forming continuous seals around cells and serving as a physical barrier to prevent solutes and water from passing freely through the paracellular space. The protein encoded by this immunoglobulin superfamily gene member is an important regulator of tight junction assembly in epithelia. In addition, the encoded protein can act as (1) a receptor for reovirus, (2) a ligand for the integrin LFA1, involved in leukocyte transmigration, and (3) a platelet receptor. Multiple 5' alternatively spliced variants, encoding the same protein, have been identified but their biological validity has not been established.

## Immunogen information

### Gene ID:

50848

### Uniprot

Q9Y624

### Synonyms:

F11R; CD321; JAM; JAM1; JAMA; JCAM; KAT; PAM-1

### Immunogen:

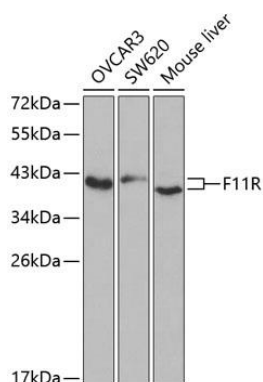
Recombinant fusion protein containing a sequence corresponding to amino acids 30-238 of human F11R (NP\_058642.1).

### Storage:

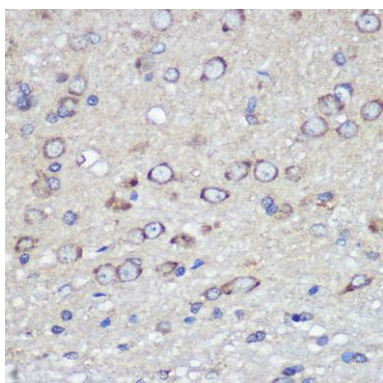
Store at -20°C. Avoid freeze / thaw cycles. Buffer: PBS with 0.02% sodium azide, 50% glycerol, pH7.3.

## Product Images

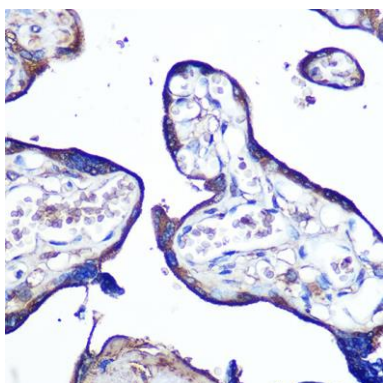
---



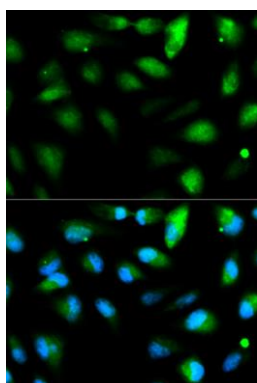
Western blot analysis of extracts of various cell lines, using F11R antibody (CAB1241) at 1:1000 dilution. Secondary antibody: HRP Goat Anti-Rabbit IgG (H+L) (CABS014) at 1:10000 dilution. Lysates/proteins: 25ug per lane. Blocking buffer: 3% nonfat dry milk in TBST.



Immunohistochemistry of paraffin-embedded rat brain using F11R Rabbit pAb (CAB1241) at dilution of 1:100 (40x lens).



Immunohistochemistry of paraffin-embedded human placenta using F11R Rabbit pAb (CAB1241) at dilution of 1:100 (40x lens).



Immunofluorescence analysis of HeLa cells using F11R antibody (CAB1241). Blue: DAPI for nuclear staining.