

[KO Validated] CD44 Rabbit Polyclonal Antibody



CAB12410

Product Information

Size:

20uL, 50uL, 100uL, 200uL

Observed MW:

80kDa

Calculated MW:

3kDa/15kDa/32-53kDa/
73-81kDa

Applications:

WB, IHC, IF

Reactivity:

Human, Mouse, Rat

Antibody Information

Recommended dilutions:

WB 1:500 - 1:2000
IHC 1:50 - 1:200
IF 1:50 - 1:200

Source:

Rabbit

Isotype:

IgG

Purification:

Affinity purification

Protein Background

The protein encoded by this gene is a cell-surface glycoprotein involved in cell-cell interactions, cell adhesion and migration. It is a receptor for hyaluronic acid (HA) and can also interact with other ligands, such as osteopontin, collagens, and matrix metalloproteinases (MMPs). This protein participates in a wide variety of cellular functions including lymphocyte activation, recirculation and homing, hematopoiesis, and tumour metastasis. Transcripts for this gene undergo complex alternative splicing that results in many functionally distinct isoforms, however, the full length nature of some of these variants has not been determined. Alternative splicing is the basis for the structural and functional diversity of this protein and may be related to tumour metastasis.

Immunogen information

Gene ID:

960

Uniprot

P16070

Synonyms:

CDW44; CSPG8; ECMR-III; HCELL; HUTCH-I; IN; LHR; MC56; MDU2;
MDU3; MIC4; Pgp1; CD44; CD44

Immunogen:

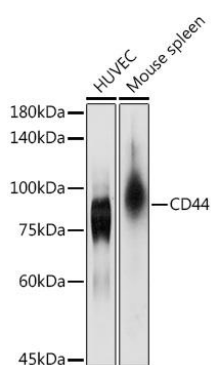
Recombinant fusion protein containing a sequence corresponding to amino acids 148-247 of human CD44 (NP_001189486.1).

Storage:

Store at -20°C. Avoid freeze / thaw cycles.

Buffer: PBS with 0.02% sodium azide, 50% glycerol, pH7.3.

Product Images



Western blot analysis of extracts of various cell lines, using CD44 antibody (CAB12410) at 1:1000 dilution.

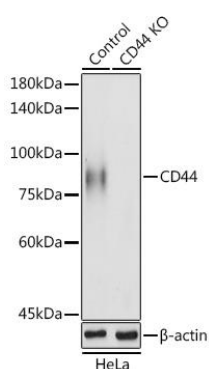
Secondary antibody: HRP Goat Anti-Rabbit IgG (H+L) (CABS014) at 1:10000 dilution.

Lysates/proteins: 25ug per lane.

Blocking buffer: 3% non-fat dry milk in TBST.

Detection: ECL Basic Kit (AbGn00020).

Exposure time: 10s.



Western blot analysis of extracts of HeLa cells, using CD44 antibody (CAB12410) at 1:1000 dilution.

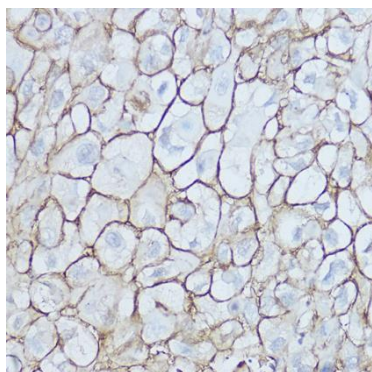
Secondary antibody: HRP Goat Anti-Rabbit IgG (H+L) (CABS014) at 1:10000 dilution.

Lysates/proteins: 25ug per lane.

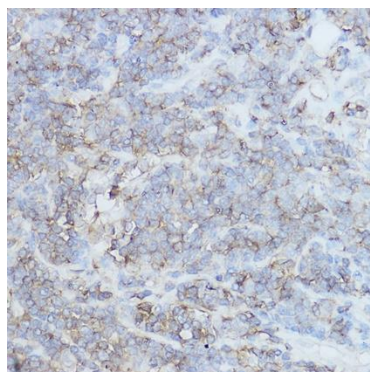
Blocking buffer: 3% non-fat dry milk in TBST.

Detection: ECL Basic Kit (AbGn00020).

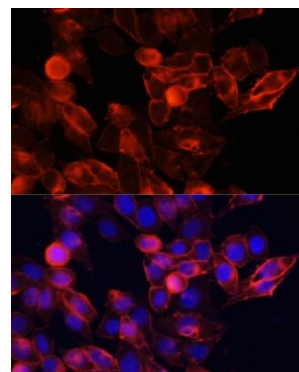
Exposure time: 10s.



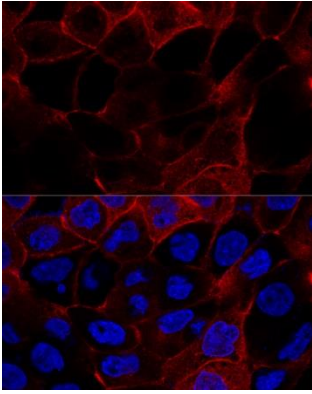
Immunohistochemistry of paraffinembedded human esophageal cancer using [KO Validated] CD44 Rabbit pAb (CAB12410) at dilution of 1:250 (40x lens).



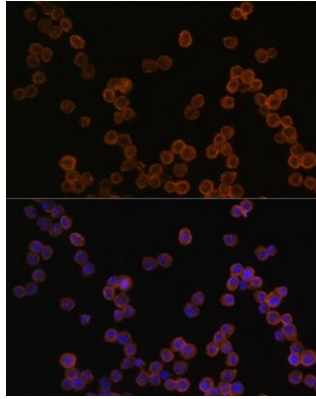
Immunohistochemistry of paraffinembedded human lung cancer using [KO Validated] CD44 Rabbit pAb (CAB12410) at dilution of 1:250 (40x lens).



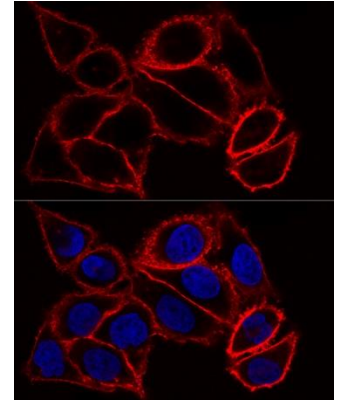
Immunofluorescence analysis of HeLa cells using CD44 antibody (CAB12410) at dilution of 1:100. Blue: DAPI for nuclear staining.



Confocal immunofluorescence analysis Of A431 cells using CD44 antibody (CAB12410) at dilution of 1:200. Blue: DAPI for nuclear staining.



Immunofluorescence analysis of RAW264.7 cells using CD44 antibody (CAB12410) at dilution of 1:100. Blue: DAPI for nuclear staining.



Confocal immunofluorescence analysis of HeLa cells using [KO Validated] CD44 Polyclonal Antibody (CAB12410) at dilution of 1:100. Blue: DAPI for nuclear staining.