

CDH5 Rabbit Polyclonal Antibody



CAB12416

Product Information

Size:

20uL, 50uL, 100uL, 200uL

Observed MW:

120-140kDa

Calculated MW:

74kDa/87kDa

Applications:

WB IHC

Reactivity:

Human, Mouse

Antibody Information

Recommended dilutions:

WB 1:500 - 1:2000 IHC 1:50
- 1:200

Source:

Rabbit

Isotype:

IgG

Purification:

Affinity purification

Protein Background

This gene encodes a classical cadherin of the cadherin superfamily. The encoded preproprotein is proteolytically processed to generate the mature glycoprotein. This calcium-dependent cell-cell adhesion molecule is comprised of five extracellular cadherin repeats, a transmembrane region and a highly conserved cytoplasmic tail. Functioning as a classical cadherin by imparting to cells the ability to adhere in a homophilic manner, this protein plays a role in endothelial adherens junction assembly and maintenance. This gene is located in a gene cluster in a region on the long arm of chromosome 16 that is involved in loss of heterozygosity events in breast and prostate cancer.

Immunogen information

Gene ID:

1003

Uniprot

P33151

Synonyms:

CDH5; 7B4; CD144; cadherin-5

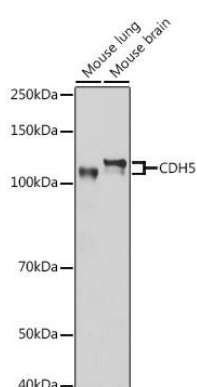
Immunogen:

A synthetic peptide corresponding to a sequence within amino acids 650-750 of human CDH5 (NP_001786.2).

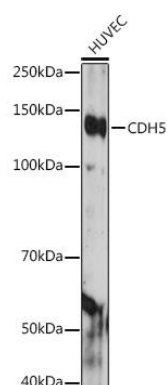
Storage:

Store at -20°C. Avoid freeze / thaw cycles. Buffer: PBS with 0.02% sodium azide, 50% glycerol, pH7.3.

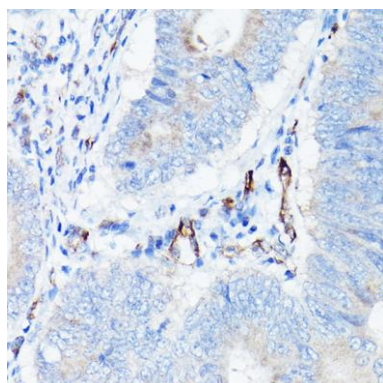
Product Images



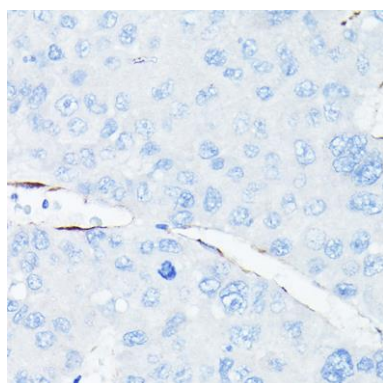
Western blot analysis of extracts of various cell lines, using CDH5 antibody (CAB12416) at 1:500 dilution. Secondary antibody: HRP Goat Anti-Rabbit IgG (H+L) (CABS014) at 1:10000 dilution. Lysates/proteins: 25ug per lane. Blocking buffer: 3% nonfat dry milk in TBST. Detection: ECL Basic Kit (CABM00020). Exposure time: 10s.



Western blot analysis of extracts of HUVEC cells, using CDH5 antibody (CAB12416) at 1:500 dilution. Secondary antibody: HRP Goat Anti-Rabbit IgG (H+L) (CABS014) at 1:10000 dilution. Lysates/proteins: 25ug per lane. Blocking buffer: 3% nonfat dry milk in TBST. Detection: ECL Basic Kit (CABM00020). Exposure time: 180s.



Immunohistochemistry of paraffin-embedded human colon carcinoma using CDH5 Rabbit pAb (CAB12416) at dilution of 1:150 (40x lens).



Immunohistochemistry of paraffin-embedded human liver cancer using CDH5 Rabbit pAb (CAB12416) at dilution of 1:150 (40x lens).