

PRSS1 Rabbit Polyclonal Antibody



CAB1242

Product Information

Size:

20uL, 50uL, 100uL, 200uL

Observed MW:

35kDa

Calculated MW:

26kDa

Applications:

WB IHC

Reactivity:

Human, Mouse

Antibody Information

Recommended dilutions:

WB 1:500 - 1:2000 IHC
1:100 - 1:200

Source:

Rabbit

Isotype:

IgG

Purification:

Affinity purification

Protein Background

This gene encodes a trypsinogen, which is a member of the trypsin family of serine proteases. This enzyme is secreted by the pancreas and cleaved to its active form in the small intestine. It is active on peptide linkages involving the carboxyl group of lysine or arginine. Mutations in this gene are associated with hereditary pancreatitis. This gene and several other trypsinogen genes are localized to the T cell receptor beta locus on chromosome 7.

Immunogen information

Gene ID:

5644

Uniprot

P07477

Synonyms:

PRSS1; TRP1; TRY1; TRY4; TRYP1; trypsin-1

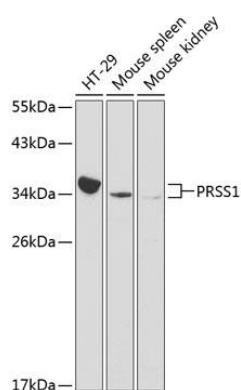
Immunogen:

Recombinant fusion protein containing a sequence corresponding to amino acids 24-247 of human PRSS1 (NP_002760.1).

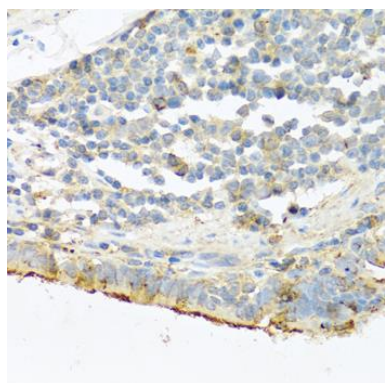
Storage:

Store at -20°C. Avoid freeze / thaw cycles. Buffer: PBS with 0.02% sodium azide, 50% glycerol, pH7.3.

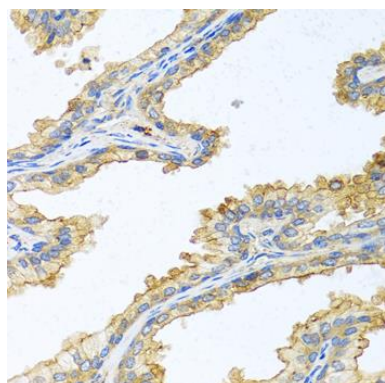
Product Images



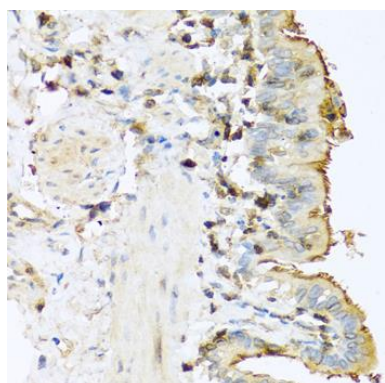
Western blot analysis of extracts of various cell lines, using PRSS1 antibody (CAB1242) at 1:1000 dilution. Secondary antibody: HRP Goat Anti-Rabbit IgG (H+L) (CABS014) at 1:10000 dilution. Lysates/proteins: 25ug per lane. Blocking buffer: 3% nonfat dry milk in TBST.



Immunohistochemistry of paraffin-embedded human lung cancer using PRSS1 antibody (CAB1242) at dilution of 1:100 (40x lens).



Immunohistochemistry of paraffin-embedded human prostate using PRSS1 antibody (CAB1242) at dilution of 1:100 (40x lens).



Immunohistochemistry of paraffin-embedded mouse lung using PRSS1 antibody (CAB1242) at dilution of 1:100 (40x lens).