

CHAT Rabbit Polyclonal Antibody



CAB12420

Product Information

Size:

20uL, 50uL, 100uL, 200uL

Observed MW:

Calculated MW:

70kDa/74kDa/82kDa

Applications:

IHC IF

Reactivity:

Human, Mouse

Antibody Information

Recommended dilutions:

IHC 1:50 - 1:100 IF 1:50 - 1:100

Source:

Rabbit

Isotype:

IgG

Purification:

Affinity purification

Protein Background

This gene encodes an enzyme which catalyzes the biosynthesis of the neurotransmitter acetylcholine. This gene product is a characteristic feature of cholinergic neurons, and changes in these neurons may explain some of the symptoms of Alzheimer's disease. Polymorphisms in this gene have been associated with Alzheimer's disease and mild cognitive impairment. Mutations in this gene are associated with congenital myasthenic syndrome associated with episodic apnea. Multiple transcript variants encoding different isoforms have been found for this gene, and some of these variants have been shown to encode more than one isoform.

Immunogen information

Gene ID:

1103

Uniprot

P28329

Synonyms:

CHAT; CHOACTASE; CMS1A; CMS1A2; CMS6

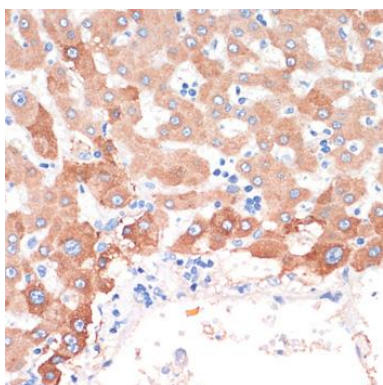
Immunogen:

Recombinant fusion protein containing a sequence corresponding to amino acids 331-630 of human CHAT (NP_001136401.1).

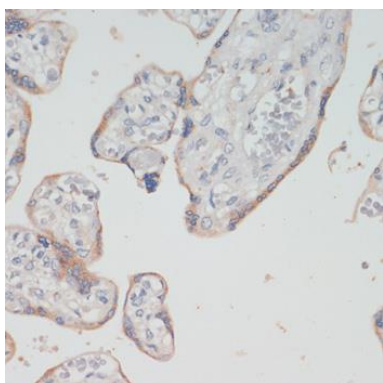
Storage:

Store at -20°C. Avoid freeze / thaw cycles. Buffer: PBS with 0.02% sodium azide, 50% glycerol, pH7.3.

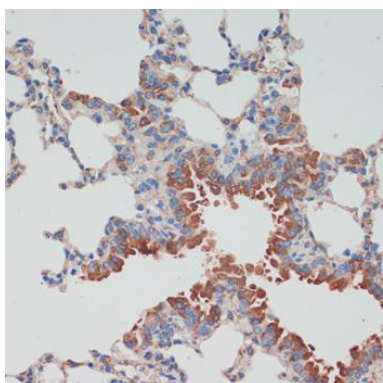
Product Images



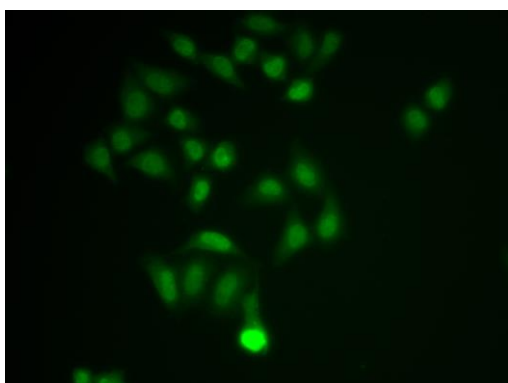
Immunohistochemistry of paraffin-embedded human liver cancer using CHAT antibody (CAB12420) at dilution of 1:200 (40x lens).



Immunohistochemistry of paraffin-embedded human placenta using CHAT antibody (CAB12420) at dilution of 1:200 (40x lens).



Immunohistochemistry of paraffin-embedded mouse lung using CHAT antibody (CAB12420) at dilution of 1:200 (40x lens).



Immunofluorescence analysis of MCF-7 cells using CHAT antibody (CAB12420).