

CEACAM5 Rabbit Polyclonal Antibody



CAB12421

Product Information

Size:

20uL, 50uL, 100uL, 200uL

Observed MW:

150kDa

Calculated MW:

76kDa

Applications:

WB IHC

Reactivity:

Mouse

Protein Background

This gene encodes a cell surface glycoprotein that represents the founding member of the carcinoembryonic antigen (CEA) family of proteins. The encoded protein is used as a clinical biomarker for gastrointestinal cancers and may promote tumor development through its role as a cell adhesion molecule. Additionally, the encoded protein may regulate differentiation, apoptosis, and cell polarity. This gene is present in a CEA family gene cluster on chromosome 19. Alternative splicing results in multiple transcript variants.

Immunogen information

Gene ID:

1048

Uniprot

P06731

Synonyms:

CEACAM5; CD66e; CEA

Antibody Information

Recommended dilutions:

WB 1:500 - 1:2000 IHC 1:50
- 1:100

Source:

Rabbit

Isotype:

IgG

Purification:

Affinity purification

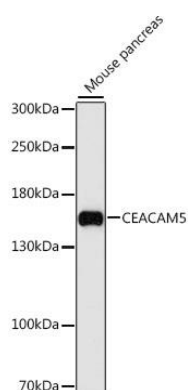
Immunogen:

Recombinant protein of human CEACAM5

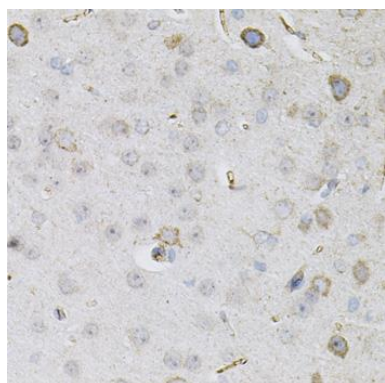
Storage:

Store at -20°C. Avoid freeze / thaw cycles. Buffer: PBS with 0.02% sodium azide, 50% glycerol, pH7.3.

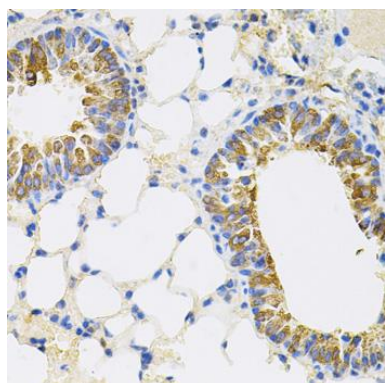
Product Images



Western blot analysis of extracts of mouse pancreas, using CEACAM5 antibody (CAB12421) at 1:1000 dilution. Secondary antibody: HRP Goat Anti-Rabbit IgG (H+L) (CABS014) at 1:10000 dilution. Lysates/proteins: 25ug per lane. Blocking buffer: 3% nonfat dry milk in TBST. Detection: ECL Basic Kit (CABM00020). Exposure time: 60s.



Immunohistochemistry of paraffin-embedded mouse brain using CEACAM5 antibody (CAB12421) (40x lens).



Immunohistochemistry of paraffin-embedded mouse lung using CEACAM5 antibody (CAB12421) (40x lens).