

CLTC Rabbit Polyclonal Antibody



CAB12423

Product Information

Size:

20uL, 50uL, 100uL, 200uL

Observed MW:

191kDa

Calculated MW:

187kDa/191kDa

Applications:

WB IF

Reactivity:

Human, Mouse, Rat

Protein Background

Clathrin is a major protein component of the cytoplasmic face of intracellular organelles, called coated vesicles and coated pits. These specialized organelles are involved in the intracellular trafficking of receptors and endocytosis of a variety of macromolecules. The basic subunit of the clathrin coat is composed of three heavy chains and three light chains.

Immunogen information

Gene ID:

1213

Uniprot

Q00610

Synonyms:

CLTC; CHC; CHC17; CLH-17; CLTCL2; Hc

Antibody Information

Recommended dilutions:

WB 1:500 - 1:2000 IF 1:50 - 1:200

Source:

Rabbit

Isotype:

IgG

Purification:

Affinity purification

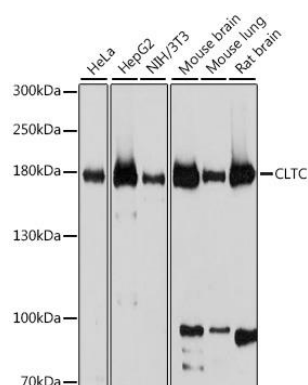
Immunogen:

Recombinant fusion protein containing a sequence corresponding to amino acids 1451-1675 of human CLTC (NP_004850.1).

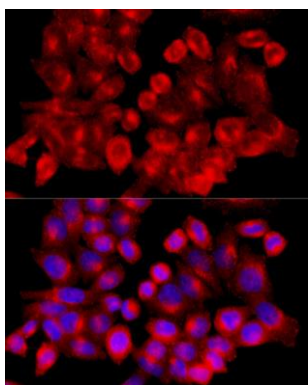
Storage:

Store at -20°C. Avoid freeze / thaw cycles. Buffer: PBS with 0.02% sodium azide, 50% glycerol, pH7.3.

Product Images



Western blot analysis of extracts of various cell lines, using CLTC antibody (CAB12423) at 1:1000 dilution. Secondary antibody: HRP Goat Anti-Rabbit IgG (H+L) (CABS014) at 1:10000 dilution. Lysates/proteins: 25ug per lane. Blocking buffer: 3% nonfat dry milk in TBST. Detection: ECL Basic Kit (CABM00020). Exposure time: 5s.



Immunofluorescence analysis of HeLa cells using CLTC antibody (CAB12423) at dilution of 1:100 (40x lens). Blue: DAPI for nuclear staining.