

ELN Rabbit Polyclonal Antibody



CAB12433

Product Information

Size:

20uL, 50uL, 100uL, 200uL

Observed MW:

Calculated MW:

48kDa/56-69kDa

Applications:

IHC

Reactivity:

Human

Protein Background

This gene encodes a protein that is one of the two components of elastic fibers. The encoded protein is rich in hydrophobic amino acids such as glycine and proline, which form mobile hydrophobic regions bounded by crosslinks between lysine residues. Deletions and mutations in this gene are associated with supraaortic stenosis (SVAS) and autosomal dominant cutis laxa. Multiple transcript variants encoding different isoforms have been found for this gene.

Immunogen information

Gene ID:

2006

Uniprot

P15502

Synonyms:

ELN; SVAS; WBS; WS; ADCL1; elastin

Antibody Information

Recommended dilutions:

IHC 1:50 - 1:200

Source:

Rabbit

Isotype:

IgG

Purification:

Affinity purification

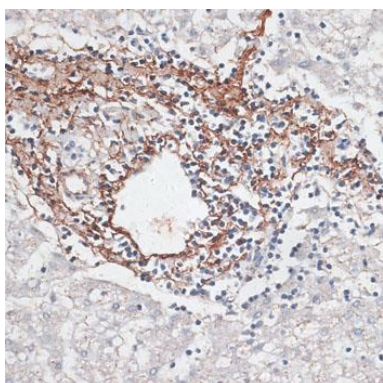
Immunogen:

Recombinant protein of human ELN

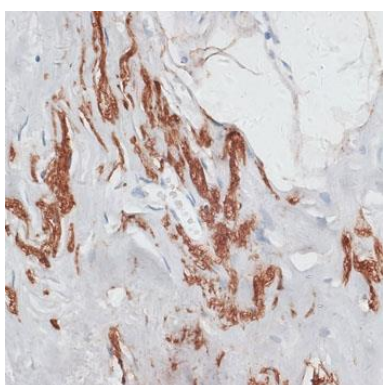
Storage:

Store at -20°C. Avoid freeze / thaw cycles. Buffer: PBS with 0.02% sodium azide, 50% glycerol, pH7.3.

Product Images



Immunohistochemistry of paraffin-embedded human liver cancer using ELN antibody (CAB12433) at dilution of 1:100 (40x lens).



Immunohistochemistry of paraffin-embedded human breast using ELN antibody (CAB12433) at dilution of 1:100 (40x lens).