

GRN Rabbit Polyclonal Antibody



CAB12440

Product Information

Size:

20uL, 50uL, 100uL, 200uL

Observed MW:

88kDa

Calculated MW:

44kDa/46kDa/63kDa

Applications:

WB IHC IF

Reactivity:

Human, Mouse

Antibody Information

Recommended dilutions:

WB 1:500 - 1:2000 IHC 1:50
- 1:200 IF 1:50 - 1:200

Source:

Rabbit

Isotype:

IgG

Purification:

Affinity purification

Protein Background

Granulins are a family of secreted, glycosylated peptides that are cleaved from a single precursor protein with 7.5 repeats of a highly conserved 12-cysteine granulin/epithelin motif. The 88 kDa precursor protein, progranulin, is also called proepithelin and PC cell-derived growth factor. Cleavage of the signal peptide produces mature granulin which can be further cleaved into a variety of active, 6 kDa peptides. These smaller cleavage products are named granulin A, granulin B, granulin C, etc. Epithelins 1 and 2 are synonymous with granulins A and B, respectively. Both the peptides and intact granulin protein regulate cell growth. However, different members of the granulin protein family may act as inhibitors, stimulators, or have dual actions on cell growth. Granulin family members are important in normal development, wound healing, and tumorigenesis.

Immunogen information

Gene ID:

2896

Uniprot

P28799

Synonyms:

GRN; CLN11; GEP; GP88; PCDGF; PEPI; PGRN; granulins

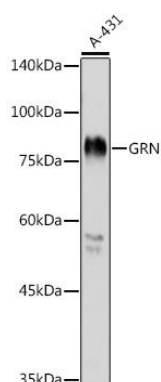
Immunogen:

Recombinant fusion protein containing a sequence corresponding to amino acids 281-336 of human GRN (NP_002078.1).

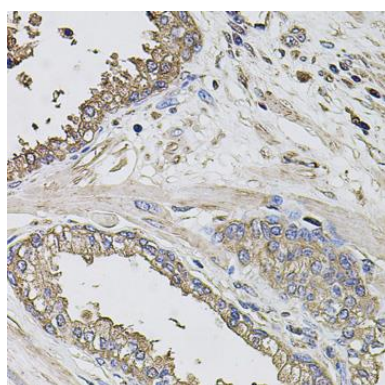
Storage:

Store at -20°C. Avoid freeze / thaw cycles. Buffer: PBS with 0.02% sodium azide, 50% glycerol, pH7.3.

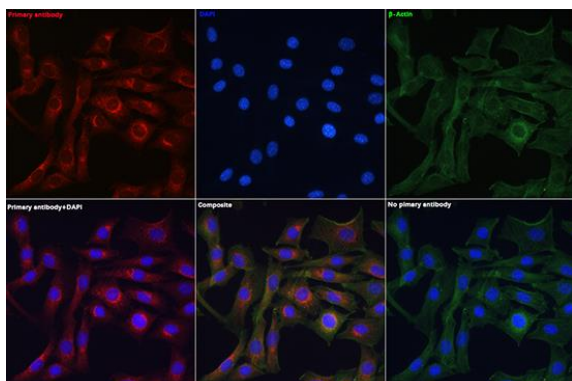
Product Images



Western blot analysis of extracts of A-431 cells, using GRN antibody (CAB12440) at 1:1000 dilution. Secondary antibody: HRP Goat Anti-Rabbit IgG (H+L) (CABS014) at 1:10000 dilution. Lysates/proteins: 25ug per lane. Blocking buffer: 3% nonfat dry milk in TBST. Detection: ECL Basic Kit (CABM00020). Exposure time: 180s.



Immunohistochemistry of paraffin-embedded human prostate using GRN antibody (CAB12440) at dilution of 1:100 (40x lens).



Immunofluorescence analysis of NIH-3T3 cells using GRN Rabbit pAb (CAB12440) at dilution of 1:200 (40x lens). Blue: DAPI for nuclear staining.