

Hsp90 alpha Rabbit Polyclonal Antibody



CAB12448

Product Information

Size:

20uL, 50uL, 100uL, 200uL

Observed MW:

101kDa

Calculated MW:

84kDa/98kDa

Applications:

WB IHC IF

Reactivity:

Human, Mouse, Rat

Antibody Information

Recommended dilutions:

WB 1:500 - 1:2000 IHC 1:50
- 1:200 IF 1:50 - 1:200

Source:

Rabbit

Isotype:

IgG

Purification:

Affinity purification

Protein Background

The protein encoded by this gene is an inducible molecular chaperone that functions as a homodimer. The encoded protein aids in the proper folding of specific target proteins by use of an ATPase activity that is modulated by co-chaperones. Two transcript variants encoding different isoforms have been found for this gene.

Immunogen information

Gene ID:

3320

Uniprot

P07900

Synonyms:

HSP90AA1; EL52; HEL-S-65p; HSP86; HSP89A; HSP90A; HSP90N;
HSPC1; HSPCA; HSPCAL1; HSPCAL4; HSPN; Hsp103; Hsp89; Hsp90;
LAP-2; LAP2

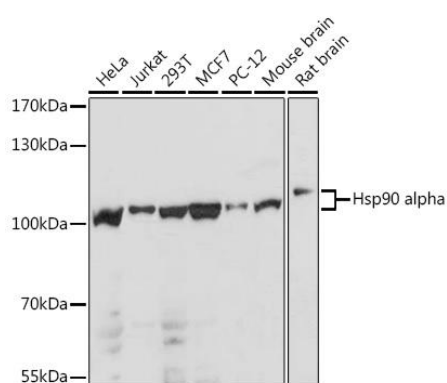
Immunogen:

A synthetic peptide of human Hsp90 alpha

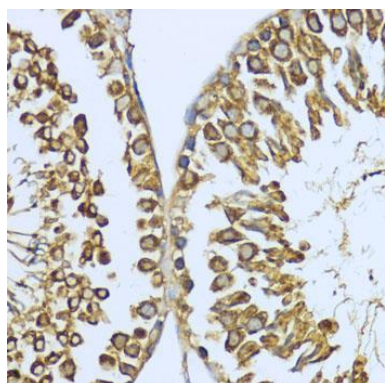
Storage:

Store at -20°C. Avoid freeze / thaw cycles. Buffer: PBS with 0.02% sodium azide, 50% glycerol, pH7.3.

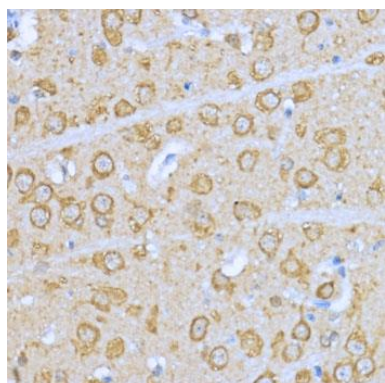
Product Images



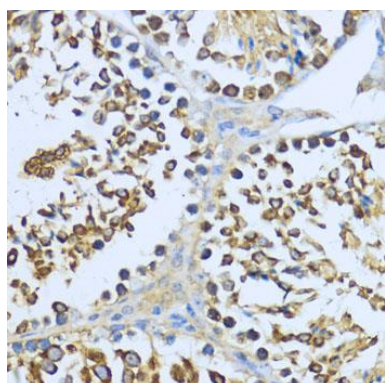
Western blot analysis of extracts of various cell lines, using HSP90AA1 antibody (CAB12448) at 1:1000 dilution. Secondary antibody: HRP Goat Anti-Rabbit IgG (H+L) (CABS014) at 1:10000 dilution. Lysates/proteins: 25ug per lane. Blocking buffer: 3% nonfat dry milk in TBST. Detection: ECL Basic Kit (CABM00020). Exposure time: 30s.



Immunohistochemistry of paraffin-embedded rat testis using HSP90AA1 antibody (CAB12448) at dilution of 1:200 (40x lens).



Immunohistochemistry of paraffin-embedded rat brain using HSP90AA1 antibody (CAB12448) at dilution of 1:200 (40x lens).



Immunohistochemistry of paraffin-embedded mouse testis using HSP90AA1 antibody (CAB12448) at dilution of 1:200 (40x lens).