

PSMA3 Rabbit Polyclonal Antibody



CAB1245

Product Information

Size:

20uL, 50uL, 100uL, 200uL

Observed MW:

28kDa

Calculated MW:

27kDa/28kDa

Applications:

WB IF IP

Reactivity:

Human, Mouse, Rat

Antibody Information

Recommended dilutions:

WB 1:500 - 1:2000 IF 1:50 -
1:200 IP 1:50 - 1:100

Source:

Rabbit

Isotype:

IgG

Purification:

Affinity purification

Protein Background

The proteasome is a multicatalytic proteinase complex with a highly ordered ring-shaped 20S core structure. The core structure is composed of 4 rings of 28 non-identical subunits; 2 rings are composed of 7 alpha subunits and 2 rings are composed of 7 beta subunits. Proteasomes are distributed throughout eukaryotic cells at a high concentration and cleave peptides in an ATP/ubiquitin-dependent process in a non-lysosomal pathway. An essential function of a modified proteasome, the immunoproteasome, is the processing of class I MHC peptides. This gene encodes a member of the peptidase T1A family, that is a 20S core alpha subunit. Two alternative transcripts encoding different isoforms have been identified.

Immunogen information

Gene ID:

5684

Uniprot

P25788

Synonyms:

PSMA3; HC8; PSC3

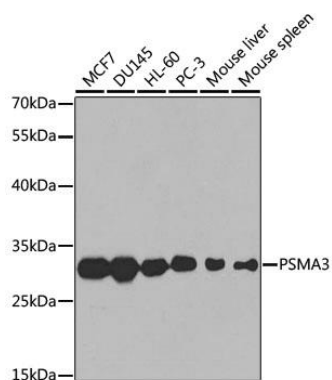
Immunogen:

Recombinant fusion protein containing a sequence corresponding to amino acids 1-255 of human PSMA3 (NP_002779.1).

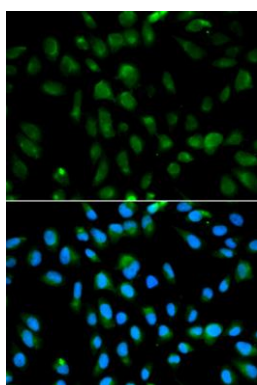
Storage:

Store at -20°C. Avoid freeze / thaw cycles. Buffer: PBS with 0.02% sodium azide, 50% glycerol, pH7.3.

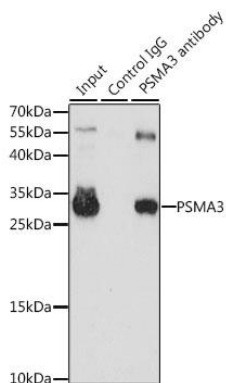
Product Images



Western blot analysis of extracts of various cell lines, using PSMA3 antibody (CAB1245) at 1:1000 dilution. Secondary antibody: HRP Goat Anti-Rabbit IgG (H+L) (CABS014) at 1:10000 dilution. Lysates/proteins: 25ug per lane. Blocking buffer: 3% nonfat dry milk in TBST.



Immunofluorescence analysis of MCF-7 cells using PSMA3 antibody (CAB1245). Blue: DAPI for nuclear staining.



Immunoprecipitation analysis of 200ug extracts of HL-60 cells, using 3 ug PSMA3 antibody (CAB1245). Western blot was performed from the immunoprecipitate using PSMA3 antibody (CAB1245) at a dilution of 1:1000.