

IGFBP5 Rabbit Polyclonal Antibody



CAB12451

Product Information

Size:

20uL, 50uL, 100uL, 200uL

Observed MW:

30kDa

Calculated MW:

30kDa

Applications:

WB IHC IF

Reactivity:

Human, Mouse, Rat

Antibody Information

Recommended dilutions:

WB 1:500 - 1:2000 IHC 1:50
- 1:200 IF 1:50 - 1:200

Source:

Rabbit

Isotype:

IgG

Purification:

Affinity purification

Protein Background

Immunogen information

Gene ID:

3488

Uniprot

P24593

Synonyms:

IGFBP5; IBP5

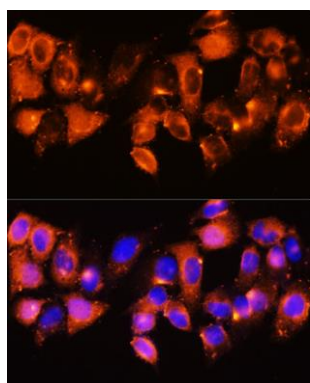
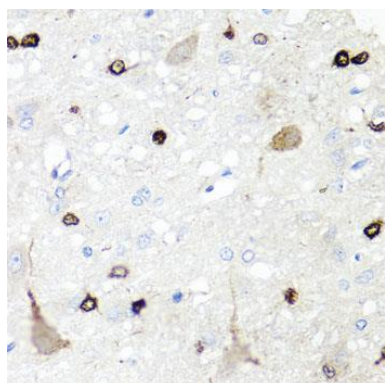
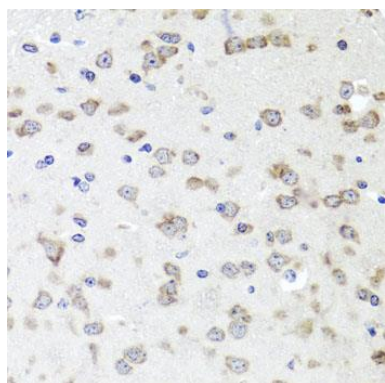
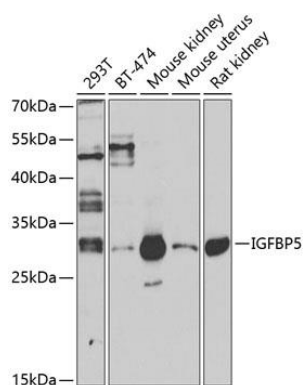
Immunogen:

Recombinant fusion protein containing a sequence corresponding to amino acids 68-167 of human IGFBP5 (NP_000590.1).

Storage:

Store at -20°C. Avoid freeze / thaw cycles. Buffer: PBS with 0.02% sodium azide, 50% glycerol, pH7.3.

Product Images



Western blot analysis of extracts of various cell lines, using IGFBP5 antibody (CAB12451) at 1:1000 dilution. Secondary antibody: HRP Goat Anti-Rabbit IgG (H+L) (CABS014) at 1:10000 dilution. Lysates/proteins: 25ug per lane. Blocking buffer: 3% nonfat dry milk in TBST. Detection: ECL Enhanced Kit (CABM00021). Exposure time: 30s.

Immunohistochemistry of paraffin-embedded mouse brain using IGFBP5 antibody (CAB12451) at dilution of 1:100 (40x lens).

Immunohistochemistry of paraffin-embedded rat brain using IGFBP5 antibody (CAB12451) at dilution of 1:100 (40x lens).

Immunofluorescence analysis of HeLa cells using IGFBP5 antibody (CAB12451) at dilution of 1:100. Blue: DAPI for nuclear staining.