

MSN Rabbit Polyclonal Antibody



CAB12463

Product Information

Size:

20uL, 50uL, 100uL, 200uL

Observed MW:

72kDa

Calculated MW:

67kDa

Applications:

WB IHC

Reactivity:

Human, Mouse

Protein Background

Moesin (for membrane-organizing extension spike protein) is a member of the ERM family which includes ezrin and radixin. ERM proteins appear to function as cross-linkers between plasma membranes and actin-based cytoskeletons. Moesin is localized to filopodia and other membranous protrusions that are important for cell-cell recognition and signaling and for cell movement.

Immunogen information

Gene ID:

4478

Uniprot

P26038

Synonyms:

MSN; HEL70; IMD50; moesin

Antibody Information

Recommended dilutions:

WB 1:500 - 1:2000 IHC 1:50
- 1:200

Source:

Rabbit

Isotype:

IgG

Purification:

Affinity purification

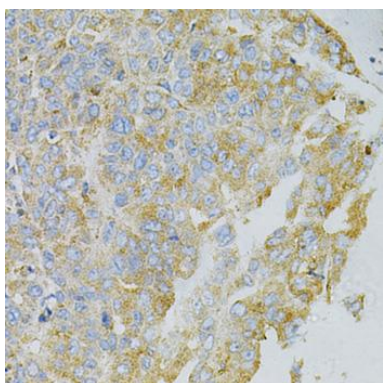
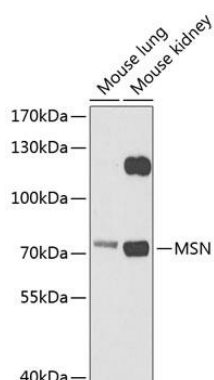
Immunogen:

Recombinant fusion protein containing a sequence corresponding to amino acids 1-300 of human MSN (NP_002435.1).

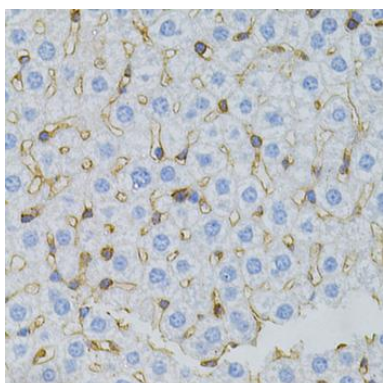
Storage:

Store at -20°C. Avoid freeze / thaw cycles. Buffer: PBS with 0.02% sodium azide, 50% glycerol, pH7.3.

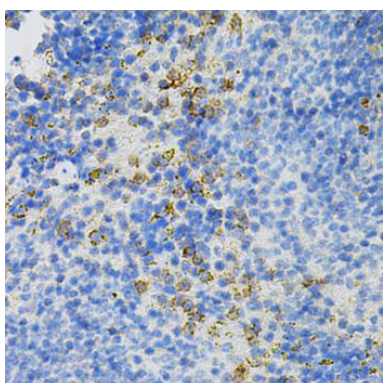
Product Images



Immunohistochemistry of paraffin-embedded human liver cancer using MSN antibody (CAB12463) at dilution of 1:100 (40x lens).



Immunohistochemistry of paraffin-embedded mouse liver using MSN antibody (CAB12463) at dilution of 1:100 (40x lens).



Immunohistochemistry of paraffin-embedded mouse spleen using MSN antibody (CAB12463) at dilution of 1:100 (40x lens).