

# MYO10 Rabbit Polyclonal Antibody



CAB12466

---

## Product Information

### Size:

20uL, 50uL, 100uL, 200uL

### Observed MW:

270kDa

### Calculated MW:

11kDa/163kDa/237kDa

### Applications:

WB

### Reactivity:

Human, Mouse

## Antibody Information

### Recommended dilutions:

WB 1:500 - 1:2000

### Source:

Rabbit

### Isotype:

IgG

### Purification:

Affinity purification

## Protein Background

This gene encodes a member of the myosin superfamily. The protein represents an unconventional myosin; it should not be confused with the conventional non-muscle myosin-10 (MYH10). Unconventional myosins contain the basic domains of conventional myosins and are further distinguished from class members by their tail domains. This gene functions as an actin-based molecular motor and plays a role in integration of F-actin and microtubule cytoskeletons during meiosis.

## Immunogen information

### Gene ID:

4651

### Uniprot

Q9HD67

### Synonyms:

MYO10; myosin X

### Immunogen:

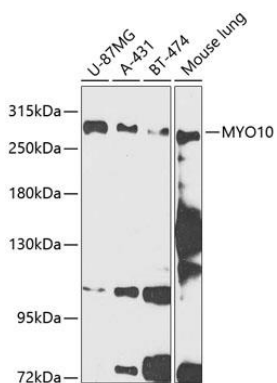
Recombinant fusion protein containing a sequence corresponding to amino acids 845-944 of human MYO10 (NP\_036466.2).

### Storage:

Store at -20°C. Avoid freeze / thaw cycles. Buffer: PBS with 0.02% sodium azide, 50% glycerol, pH7.3.

## Product Images

---



Western blot analysis of extracts of various cell lines, using MYO10 antibody (CAB12466) at 1:1000 dilution. Secondary antibody: HRP Goat Anti-Rabbit IgG (H+L) (CABS014) at 1:10000 dilution. Lysates/proteins: 25ug per lane. Blocking buffer: 3% nonfat dry milk in TBST. Detection: ECL Enhanced Kit (CABM00021). Exposure time: 90s.