

**[KO Validated] EHMT2 Rabbit Polyclonal  
Antibody  
CAB1247**



---

**Product Information**

**Size:**

20uL, 50uL, 100uL, 200uL

**Observed MW:**

132kDa

**Calculated MW:**

19kDa/129kDa/132kDa

**Applications:**

WB

**Reactivity:**

Human, Mouse, Rat

**Protein Background**

This gene encodes a methyltransferase that methylates lysine residues of histone H3. Methylation of H3 at lysine 9 by this protein results in recruitment of additional epigenetic regulators and repression of transcription. This gene was initially thought to be two different genes, NG36 and G9a, adjacent to each other in the HLA locus. Alternative splicing results in multiple transcript variants.

**Immunogen information**

**Gene ID:**

10919

**Uniprot**

Q96KQ7

**Synonyms:**

EHMT2; BAT8; C6orf30; G9A; GAT8; KMT1C; NG36

**Antibody Information**

**Recommended dilutions:**

WB 1:500 - 1:2000

**Source:**

Rabbit

**Isotype:**

IgG

**Purification:**

Affinity purification

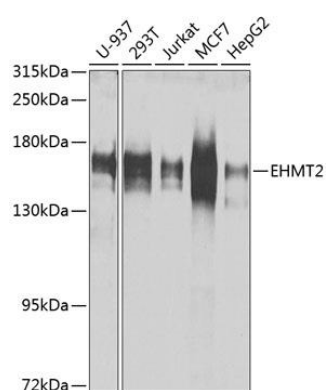
**Immunogen:**

Recombinant fusion protein containing a sequence corresponding to amino acids 877-1176 of human EHMT2 (NP\_079532.5).

**Storage:**

Store at -20°C. Avoid freeze / thaw cycles. Buffer: PBS with 0.02% sodium azide, 50% glycerol, pH7.3.

## Product Images



Western blot analysis of extracts of various cell lines, using EHMT2 antibody (CAB1247) at 1:1000 dilution. Secondary antibody: HRP Goat Anti-Rabbit IgG (H+L) (CABS014) at 1:10000 dilution. Lysates/proteins: 25ug per lane. Blocking buffer: 3% nonfat dry milk in TBST. Detection: ECL Basic Kit (CABM00020). Exposure time: 30s.



Western blot analysis of extracts from normal (control) and EHMT2 Rabbit pAb knockout (KO) 293T cells, using EHMT2 Rabbit pAb antibody (CAB1247) at 1:1000 dilution. Secondary antibody: HRP Goat Anti-Rabbit IgG (H+L) (CABS014) at 1:10000 dilution. Lysates/proteins: 25ug per lane. Blocking buffer: 3% nonfat dry milk in TBST. Detection: ECL Basic Kit (CABM00020). Exposure time: 1s.