

NTF3 Rabbit Polyclonal Antibody



CAB12475

Product Information

Size:

20uL, 50uL, 100uL, 200uL

Observed MW:

Calculated MW:

29kDa/30kDa

Applications:

IHC

Reactivity:

Mouse, Rat

Antibody Information

Recommended dilutions:

IHC 1:50 - 1:100

Source:

Rabbit

Isotype:

IgG

Purification:

Affinity purification

Protein Background

The protein encoded by this gene is a member of the neurotrophin family, that controls survival and differentiation of mammalian neurons. This protein is closely related to both nerve growth factor and brain-derived neurotrophic factor. It may be involved in the maintenance of the adult nervous system, and may affect development of neurons in the embryo when it is expressed in human placenta. NTF3-deficient mice generated by gene targeting display severe movement defects of the limbs. The mature peptide of this protein is identical in all mammals examined including human, pig, rat and mouse.

Immunogen information

Gene ID:

4908

Uniprot

P20783

Synonyms:

NTF3; HDNF; NGF-2; NGF2; NT-3; NT3

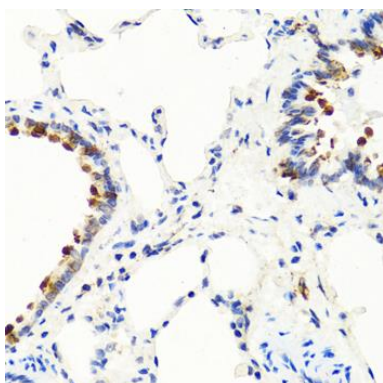
Immunogen:

Recombinant fusion protein containing a sequence corresponding to amino acids 19-257 of human NTF3 (NP_002518.1).

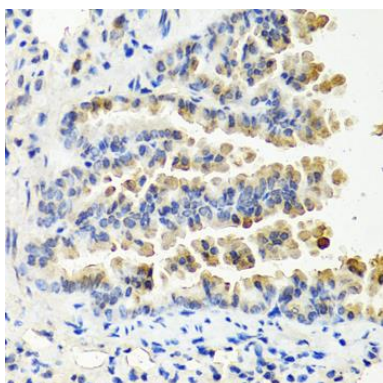
Storage:

Store at -20°C. Avoid freeze / thaw cycles. Buffer: PBS with 0.02% sodium azide, 50% glycerol, pH7.3.

Product Images



Immunohistochemistry of paraffin-embedded rat lung using NTF3 antibody (CAB12475) at dilution of 1:100 (40x lens).



Immunohistochemistry of paraffin-embedded mouse lung using NTF3 antibody (CAB12475) at dilution of 1:100 (40x lens).