

# OGDH Rabbit Polyclonal Antibody



CAB12477

## Product Information

### Size:

20uL, 50uL, 100uL, 200uL

### Observed MW:

116kDa

### Calculated MW:

48kDa/115kDa

### Applications:

WB IHC IF

### Reactivity:

Human, Mouse, Rat

## Protein Background

This gene encodes one subunit of the 2-oxoglutarate dehydrogenase complex. This complex catalyzes the overall conversion of 2-oxoglutarate (alpha-ketoglutarate) to succinyl-CoA and CO<sub>2</sub> during the Krebs cycle. The protein is located in the mitochondrial matrix and uses thiamine pyrophosphate as a cofactor. A congenital deficiency in 2-oxoglutarate dehydrogenase activity is believed to lead to hypotonia, metabolic acidosis, and hyperlactatemia. Alternative splicing results in multiple transcript variants encoding distinct isoforms.

## Immunogen information

### Gene ID:

4967

### Uniprot

Q02218

### Synonyms:

OGDH; AKGDH; E1k; OGDC

## Antibody Information

### Recommended dilutions:

WB 1:500 - 1:2000 IHC 1:50  
- 1:200 IF 1:50 - 1:200

### Source:

Rabbit

### Isotype:

IgG

### Purification:

Affinity purification

### Immunogen:

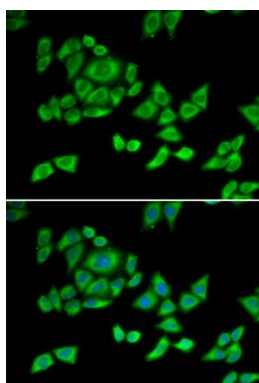
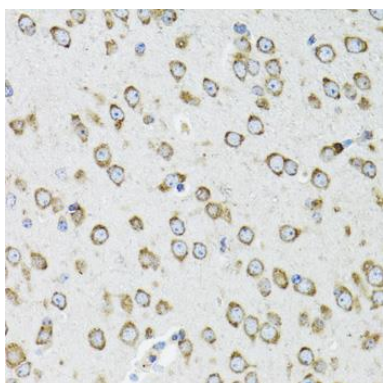
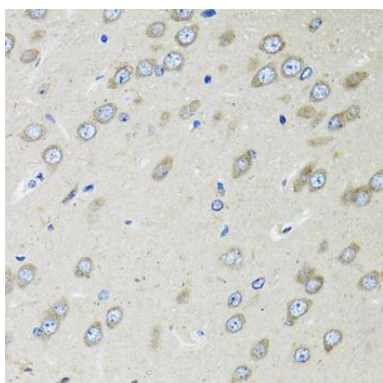
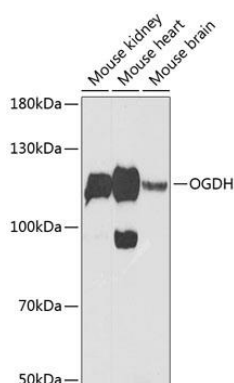
Recombinant fusion protein containing a sequence corresponding to amino acids 148-427 of human OGDH (NP\_001003941.1).

### Storage:

Store at -20°C. Avoid freeze / thaw cycles. Buffer: PBS with 0.02% sodium azide, 50% glycerol, pH7.3.

## Product Images

---



Western blot analysis of extracts of various cell lines, using OGDH Antibody (CAB12477) at 1:1000 dilution. Secondary antibody: HRP Goat Anti-Rabbit IgG (H+L) (CABS014) at 1:10000 dilution. Lysates/proteins: 25ug per lane. Blocking buffer: 3% nonfat dry milk in TBST. Detection: ECL Enhanced Kit (CABM00021). Exposure time: 90s.

Immunohistochemistry of paraffin-embedded rat brain using OGDH antibody (CAB12477) at dilution of 1:100 (40x lens).

Immunohistochemistry of paraffin-embedded mouse brain using OGDH antibody (CAB12477) at dilution of 1:100 (40x lens).

Immunofluorescence analysis of U2OS cells using OGDH antibody (CAB12477). Blue: DAPI for nuclear staining.