

SERPINA1 Rabbit Polyclonal Antibody



CAB12481

Product Information

Size:

20uL, 50uL, 100uL, 200uL

Observed MW:

45kDa, 50kDa

Calculated MW:

34kDa/40kDa/46kDa

Applications:

WB IHC IF

Reactivity:

Human, Mouse, Rat

Protein Background

The protein encoded by this gene is secreted and is a serine protease inhibitor whose targets include elastase, plasmin, thrombin, trypsin, chymotrypsin, and plasminogen activator. Defects in this gene can cause emphysema or liver disease. Several transcript variants encoding the same protein have been found for this gene.

Immunogen information

Gene ID:

5265

Uniprot

P01009

Synonyms:

SERPINA1; A1A; A1AT; AAT; PI; PI1; PRO2275; alpha1AT

Antibody Information

Recommended dilutions:

WB 1:500 - 1:2000 IHC 1:50
- 1:200 IF 1:50 - 1:200

Source:

Rabbit

Isotype:

IgG

Purification:

Affinity purification

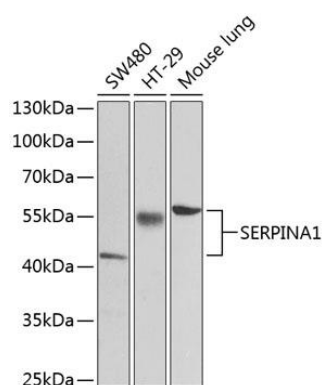
Immunogen:

Recombinant fusion protein containing a sequence corresponding to amino acids 25-315 of human SERPINA1 (NP_000286.3).

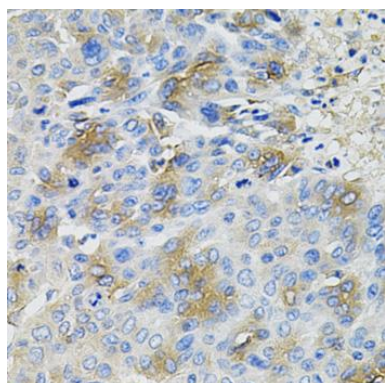
Storage:

Store at -20°C. Avoid freeze / thaw cycles. Buffer: PBS with 0.02% sodium azide, 50% glycerol, pH7.3.

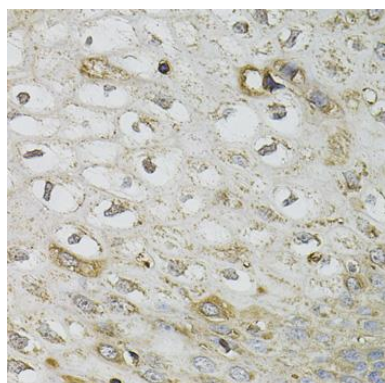
Product Images



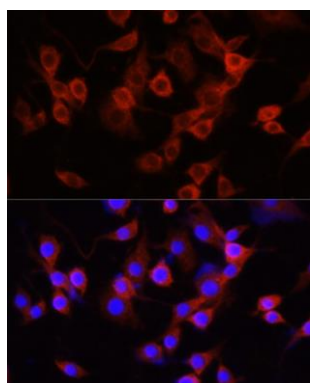
Western blot analysis of extracts of various cell lines, using SERPINA1 antibody (CAB12481) at 1:1000 dilution. Secondary antibody: HRP Goat Anti-Rabbit IgG (H+L) (CABS014) at 1:10000 dilution. Lysates/proteins: 25ug per lane. Blocking buffer: 3% nonfat dry milk in TBST.



Immunohistochemistry of paraffin-embedded human liver cancer using SERPINA1 antibody (CAB12481) at dilution of 1:100 (40x lens).



Immunohistochemistry of paraffin-embedded human esophagus using SERPINA1 antibody (CAB12481) at dilution of 1:100 (40x lens).



Immunofluorescence analysis of PC-12 cells using SERPINA1 antibody (CAB12481) at dilution of 1:100 (40x lens). Blue: DAPI for nuclear staining.