

# PI3 Rabbit Polyclonal Antibody



CAB12482

## Product Information

### Size:

20uL, 50uL, 100uL, 200uL

### Observed MW:

Refer to figures

### Calculated MW:

12kDa

### Applications:

IHC

### Reactivity:

Human, Rat

## Protein Background

This gene encodes an elastase-specific inhibitor that functions as an antimicrobial peptide against Gram-positive and Gram-negative bacteria, and fungal pathogens. The protein contains a WAP-type four-disulfide core (WFDC) domain, and is thus a member of the WFDC domain family. Most WFDC gene members are localized to chromosome 20q12-q13 in two clusters: centromeric and telomeric. This gene belongs to the centromeric cluster. Expression of this gene is upregulated by bacterial lipopolysaccharides and cytokines.

## Immunogen information

### Gene ID:

5266

### Uniprot

P19957

### Synonyms:

PI3; ESI; SKALP; WAP3; WFDC14; cementoin; elafin

## Antibody Information

### Recommended dilutions:

IHC 1:50 - 1:200

### Source:

Rabbit

### Isotype:

IgG

### Purification:

Affinity purification

### Immunogen:

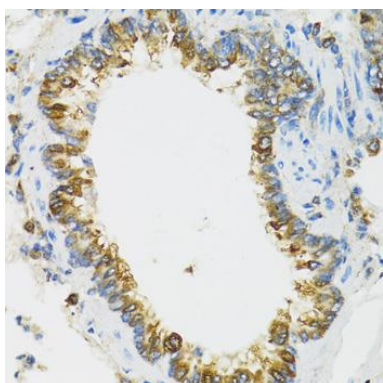
Recombinant fusion protein containing a sequence corresponding to amino acids 23-117 of human PI3 (NP\_002629.1).

### Storage:

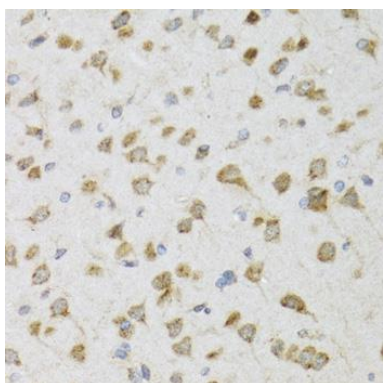
Store at -20°C. Avoid freeze / thaw cycles. Buffer: PBS with 0.02% sodium azide, 50% glycerol, pH7.3.

## Product Images

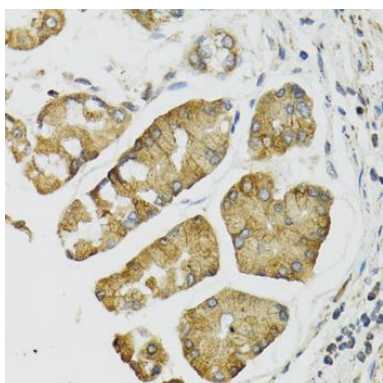
---



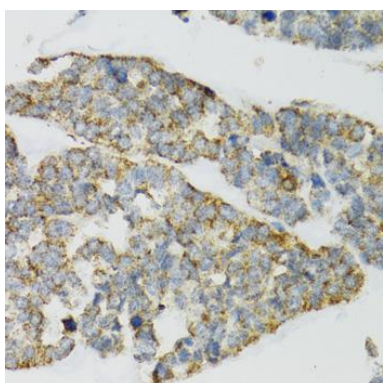
Immunohistochemistry of paraffin-embedded rat lung using PI3 antibody (CAB12482) at dilution of 1:100 (40x lens).



Immunohistochemistry of paraffin-embedded rat brain using PI3 antibody (CAB12482) at dilution of 1:100 (40x lens).



Immunohistochemistry of paraffin-embedded human esophagus using PI3 antibody (CAB12482) at dilution of 1:100 (40x lens).



Immunohistochemistry of paraffin-embedded human esophageal cancer using PI3 antibody (CAB12482) at dilution of 1:100 (40x lens).