

# PIK3CA Rabbit Polyclonal Antibody



CAB12484

---

## Product Information

### Size:

20uL, 50uL, 100uL, 200uL

### Observed MW:

110kDa

### Calculated MW:

124kDa

### Applications:

WB IHC

### Reactivity:

Human, Mouse, Rat

## Protein Background

Phosphatidylinositol 3-kinase is composed of an 85 kDa regulatory subunit and a 110 kDa catalytic subunit. The protein encoded by this gene represents the catalytic subunit, which uses ATP to phosphorylate PtdIns, PtdIns4P and PtdIns(4, 5)P2. This gene has been found to be oncogenic and has been implicated in cervical cancers. A pseudogene of this gene has been defined on chromosome 22.

## Immunogen information

### Gene ID:

5290

### Uniprot

P42336

### Synonyms:

PIK3CA; CLOVE; CWS5; MCAP; MCM; MCMT; PI3K; PI3K-alpha

## Antibody Information

### Recommended dilutions:

WB 1:500 - 1:2000 IHC 1:50  
- 1:200

### Source:

Rabbit

### Isotype:

IgG

### Purification:

Affinity purification

### Immunogen:

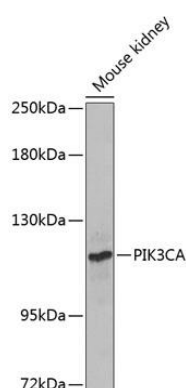
A synthetic peptide of human PIK3CA

### Storage:

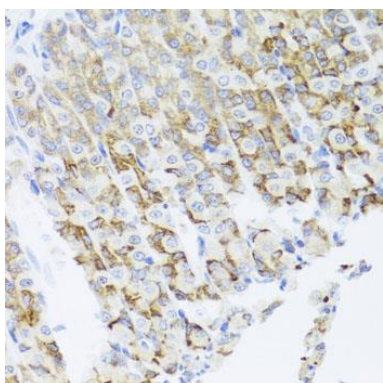
Store at -20°C. Avoid freeze / thaw cycles. Buffer: PBS with 0.02% sodium azide, 50% glycerol, pH7.3.

## Product Images

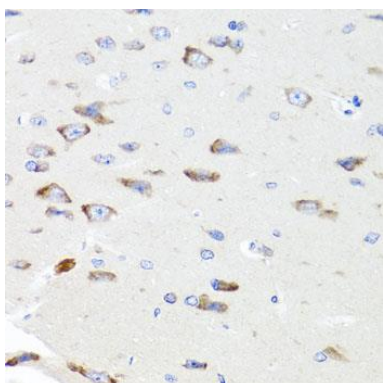
---



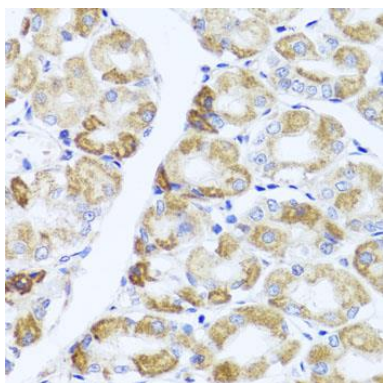
Western blot analysis of extracts of mouse kidney, using PIK3CA Antibody (CAB12484) at 1:1000 dilution. Secondary antibody: HRP Goat Anti-Rabbit IgG (H+L) (CABS014) at 1:10000 dilution. Lysates/proteins: 25ug per lane. Blocking buffer: 3% nonfat dry milk in TBST. Detection: ECL Enhanced Kit (CABM00021). Exposure time: 90s.



Immunohistochemistry of paraffin-embedded mouse stomach using PIK3CA antibody (CAB12484) at dilution of 1:100 (40x lens).



Immunohistochemistry of paraffin-embedded rat brain using PIK3CA antibody (CAB12484) at dilution of 1:100 (40x lens).



Immunohistochemistry of paraffin-embedded human stomach using PIK3CA antibody (CAB12484) at dilution of 1:100 (40x lens).