

# PTHLH Rabbit Polyclonal Antibody



CAB12492

## Product Information

### Size:

20uL, 50uL, 100uL, 200uL

### Observed MW:

Refer to figures

### Calculated MW:

19kDa/20kDa/23kDa

### Applications:

WB IHC

### Reactivity:

Human

## Antibody Information

### Recommended dilutions:

WB 1:500 - 1:2000 IHC 1:50  
- 1:200

### Source:

Rabbit

### Isotype:

IgG

### Purification:

Affinity purification

## Protein Background

The protein encoded by this gene is a member of the parathyroid hormone family. This hormone, via its receptor, PTHR1, regulates endochondral bone development and epithelial-mesenchymal interactions during the formation of the mammary glands and teeth. It is responsible for most cases of humoral hypercalcemia of malignancy, and mutations in this gene are associated with brachydactyly type E2 (BDE2). Alternatively spliced transcript variants have been found for this gene. There is also evidence for alternative translation initiation from non-AUG (CUG and GUG) start sites, downstream of the initiator AUG codon, resulting in nuclear forms of this hormone.

## Immunogen information

### Gene ID:

5744

### Uniprot

P12272

### Synonyms:

PTHLH; BDE2; HHM; PLP; PTHR; PTHRP

### Immunogen:

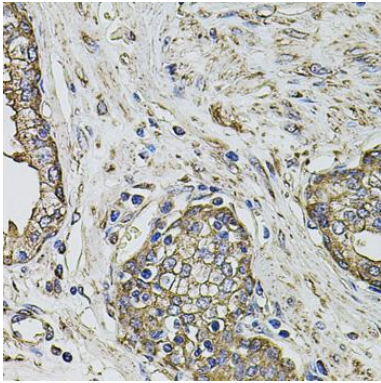
Recombinant fusion protein containing a sequence corresponding to amino acids 74-130 of human PTHLH (NP\_945316.1).

### Storage:

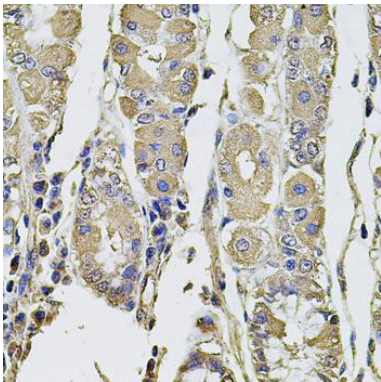
Store at -20°C. Avoid freeze / thaw cycles. Buffer: PBS with 0.02% sodium azide, 50% glycerol, pH7.3.

## Product Images

---



Immunohistochemistry of paraffin-embedded human prostate using PTHLH antibody (CAB12492) at dilution of 1:100 (40x lens).



Immunohistochemistry of paraffin-embedded human stomach using PTHLH antibody (CAB12492) at dilution of 1:100 (40x lens).