

SKP1 Rabbit Polyclonal Antibody



CAB12505

Product Information

Size:

20uL, 50uL, 100uL, 200uL

Observed MW:

19kDa

Calculated MW:

18kDa

Applications:

WB IHC

Reactivity:

Human, Mouse, Rat

Protein Background

This gene encodes a component of SCF complexes, which are composed of this protein, cullin 1, a ring-box protein, and one member of the F-box family of proteins. This protein binds directly to the F-box motif found in F-box proteins. SCF complexes are involved in the regulated ubiquitination of specific protein substrates, which targets them for degradation by the proteasome. Specific F-box proteins recognize different target protein(s), and many specific SCF substrates have been identified including regulators of cell cycle progression and development. Studies have also characterized the protein as an RNA polymerase II elongation factor. Alternative splicing of this gene results in two transcript variants. A related pseudogene has been identified on chromosome 7.

Immunogen information

Gene ID:

6500

Uniprot

P63208

Antibody Information

Recommended dilutions:

WB 1:500 - 1:2000 IHC 1:50
- 1:200

Source:

Rabbit

Isotype:

IgG

Purification:

Affinity purification

Synonyms:

SKP1; EMC19; OCP-II; OCP2; SKP1A; TCEB1L; p19A

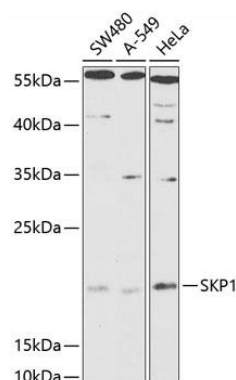
Immunogen:

Recombinant fusion protein containing a sequence corresponding to amino acids 1-163 of human SKP1 (NP_733779.1).

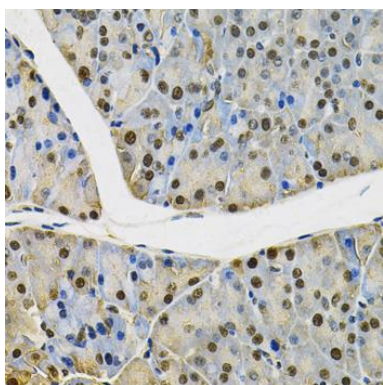
Storage:

Store at -20°C. Avoid freeze / thaw cycles. Buffer: PBS with 0.02% sodium azide, 50% glycerol, pH7.3.

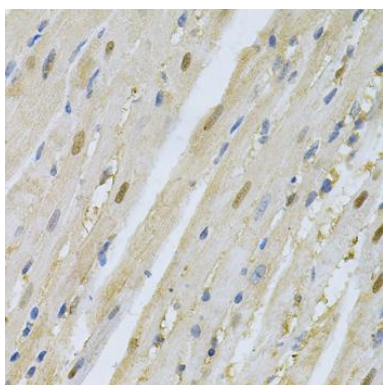
Product Images



Western blot analysis of extracts of various cell lines, using SKP1 antibody (CAB12505) at 1:1000 dilution. Secondary antibody: HRP Goat Anti-Rabbit IgG (H+L) (CABS014) at 1:10000 dilution. Lysates/proteins: 25ug per lane. Blocking buffer: 3% nonfat dry milk in TBST.



Immunohistochemistry of paraffin-embedded rat pancreas using SKP1 Antibody (CAB12505) at dilution of 1:100 (40x lens).



Immunohistochemistry of paraffin-embedded mouse heart using SKP1 Antibody (CAB12505) at dilution of 1:100 (40x lens).