

CXCR4 Rabbit Polyclonal Antibody



CAB12534

Product Information

Size:

20uL, 50uL, 100uL, 200uL

Observed MW:

60kDa

Calculated MW:

39kDa/40kDa

Applications:

WB IHC

Reactivity:

Human, Mouse, Rat

Antibody Information

Recommended dilutions:

WB 1:500 - 1:2000 IHC 1:50
- 1:200

Source:

Rabbit

Isotype:

IgG

Purification:

Affinity purification

Protein Background

This gene encodes a CXC chemokine receptor specific for stromal cell-derived factor-1. The protein has 7 transmembrane regions and is located on the cell surface. It acts with the CD4 protein to support HIV entry into cells and is also highly expressed in breast cancer cells. Mutations in this gene have been associated with WHIM (warts, hypogammaglobulinemia, infections, and myelokathexis) syndrome. Alternate transcriptional splice variants, encoding different isoforms, have been characterized.

Immunogen information

Gene ID:

7852

Uniprot

P61073

Synonyms:

CD184; D2S201E; FB22; HM89; HSY3RR; LAP-3; LAP3; LCR1; LESTR;
NPY3R; NPYR; NPYRL; NPYY3R; WHIM; WHIMS; CXCR4

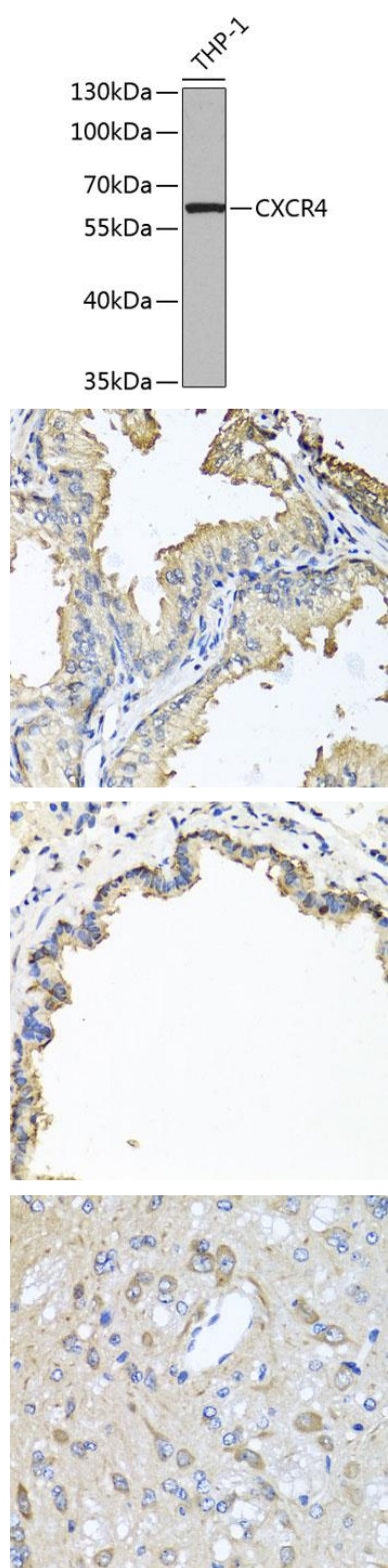
Immunogen:

Recombinant fusion protein containing a sequence corresponding to amino acids 1-42 of human CXCR4 (NP_001008540.1).

Storage:

Store at -20°C. Avoid freeze / thaw cycles. Buffer: PBS with 0.02% sodium azide, 50% glycerol, pH7.3.

Product Images



Western blot analysis of extracts of THP-1 cells, using CXCR4 Antibody (CAB12534) at 1:1000 dilution. Secondary antibody: HRP Goat Anti-Rabbit IgG (H+L) (CABS014) at 1:10000 dilution. Lysates/proteins: 25ug per lane. Blocking buffer: 3% nonfat dry milk in TBST. Detection: ECL Basic Kit (CABM00020). Exposure time: 60s.

Immunohistochemistry of paraffin-embedded human prostate using CXCR4 antibody (CAB12534) at dilution of 1:100 (40x lens).

Immunohistochemistry of paraffin-embedded rat lung using CXCR4 antibody (CAB12534) at dilution of 1:100 (40x lens).

Immunohistochemistry of paraffin-embedded rat brain using CXCR4 antibody (CAB12534) at dilution of 1:100 (40x lens).