

WISP2 Rabbit Polyclonal Antibody



CAB12541

Product Information

Size:

20uL, 50uL, 100uL, 200uL

Observed MW:

Refer to figures

Calculated MW:

22kDa/26kDa

Applications:

WB IHC IF

Reactivity:

Human, Mouse, Rat

Antibody Information

Recommended dilutions:

WB 1:500 - 1:2000 IHC 1:50
- 1:100 IF 1:50 - 1:100

Source:

Rabbit

Isotype:

IgG

Purification:

Affinity purification

Protein Background

This gene encodes a member of the WNT1 inducible signaling pathway (WISP) protein subfamily, which belongs to the connective tissue growth factor (CTGF) family. WNT1 is a member of a family of cysteine-rich, glycosylated signaling proteins that mediate diverse developmental processes. The CTGF family members are characterized by four conserved cysteine-rich domains: insulin-like growth factor-binding domain, von Willebrand factor type C module, thrombospondin domain and C-terminal cystine knot-like (CT) domain. The encoded protein lacks the CT domain which is implicated in dimerization and heparin binding. It is 72% identical to the mouse protein at the amino acid level. This gene may be downstream in the WNT1 signaling pathway that is relevant to malignant transformation. Its expression in colon tumors is reduced while the other two WISP members are overexpressed in colon tumors. It is expressed at high levels in bone tissue, and may play an important role in modulating bone turnover.

Immunogen information

Gene ID:

8839

Uniprot

O76076

Synonyms:

WISP2; CCN5; CT58; CTGF-L

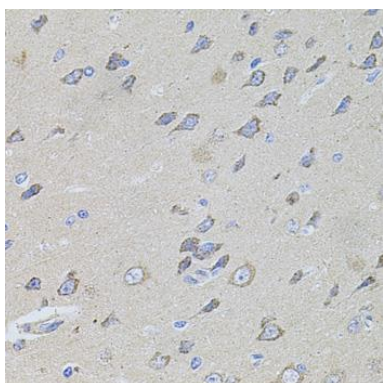
Immunogen:

Recombinant fusion protein containing a sequence corresponding to amino acids 151-250 of human WISP2 (NP_003872.1).

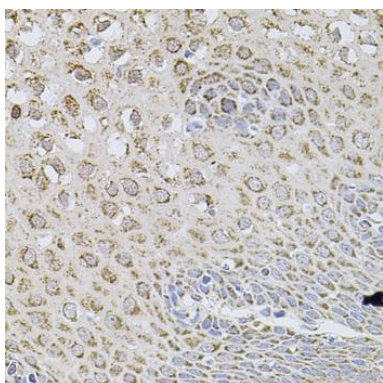
Storage:

Store at -20°C. Avoid freeze / thaw cycles. Buffer: PBS with 0.02% sodium azide, 50% glycerol, pH7.3.

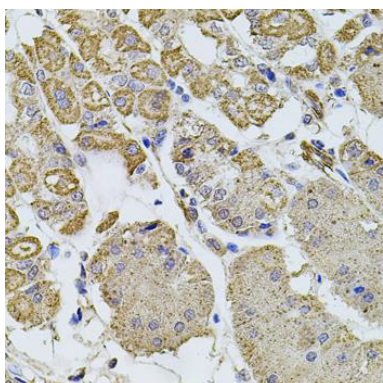
Product Images



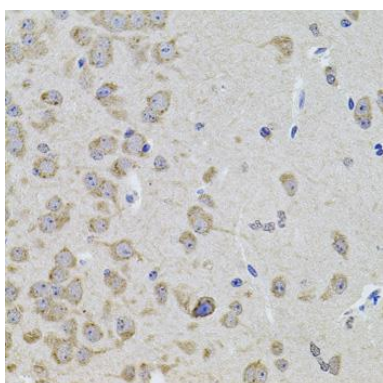
Immunohistochemistry of paraffin-embedded rat brain using WISP2 antibody (CAB12541) at dilution of 1:100 (40x lens).



Immunohistochemistry of paraffin-embedded human esophagus using WISP2 antibody (CAB12541) at dilution of 1:100 (40x lens).



Immunohistochemistry of paraffin-embedded human stomach using WISP2 antibody (CAB12541) at dilution of 1:100 (40x lens).



Immunohistochemistry of paraffin-embedded mouse brain using WISP2 antibody (CAB12541) at dilution of 1:100 (40x lens).