

# TRPA1 Rabbit Polyclonal Antibody



CAB12544

---

## Product Information

### Size:

20uL, 50uL, 100uL, 200uL

### Observed MW:

128kDa

### Calculated MW:

127kDa

### Applications:

WB IF

### Reactivity:

Human, Mouse, Rat

## Protein Background

The structure of the protein encoded by this gene is highly related to both the protein ankyrin and transmembrane proteins. The specific function of this protein has not yet been determined; however, studies indicate the function may involve a role in signal transduction and growth control.

## Immunogen information

### Gene ID:

8989

### Uniprot

O75762

### Synonyms:

TRPA1; ANKTM1; FEPS

## Antibody Information

### Recommended dilutions:

WB 1:500 - 1:2000 IF 1:50 - 1:200

### Source:

Rabbit

### Isotype:

IgG

### Purification:

Affinity purification

### Immunogen:

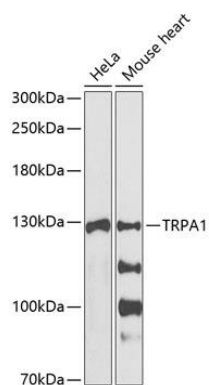
A synthetic peptide corresponding to a sequence within amino acids 850-950 of human TRPA1 (NP\_015628.2).

### Storage:

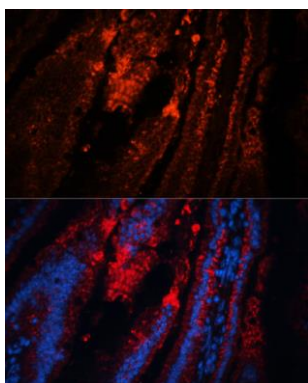
Store at -20°C. Avoid freeze / thaw cycles. Buffer: PBS with 0.02% sodium azide, 50% glycerol, pH7.3.

## Product Images

---



Western blot analysis of extracts of various cell lines, using TRPA1 antibody (CAB12544) at 1:1000 dilution. Secondary antibody: HRP Goat Anti-Rabbit IgG (H+L) (CABS014) at 1:10000 dilution. Lysates/proteins: 25ug per lane. Blocking buffer: 3% nonfat dry milk in TBST. Detection: ECL Basic Kit (CABM00020). Exposure time: 90s.



Immunofluorescence analysis of mouse intestine using TRPA1 antibody (CAB12544) at dilution of 1:100. Blue: DAPI for nuclear staining.