

ARHGEF2 Rabbit Polyclonal Antibody



CAB12547

Product Information

Size:

20uL, 50uL, 100uL, 200uL

Observed MW:

Calculated MW:

108kDa/111kDa

Applications:

IHC

Reactivity:

Mouse

Antibody Information

Recommended dilutions:

IHC 1:50 - 1:100

Source:

Rabbit

Isotype:

IgG

Purification:

Affinity purification

Protein Background

Rho GTPases play a fundamental role in numerous cellular processes that are initiated by extracellular stimuli that work through G protein coupled receptors. The encoded protein may form complex with G proteins and stimulate rho-dependent signals. Alternatively spliced transcript variants encoding different isoforms have been identified.

Immunogen information

Gene ID:

9181

Uniprot

Q92974

Synonyms:

GEF; GEF-H1; GEFH1; LFP40; P40; ARHGEF2; NEDMHM

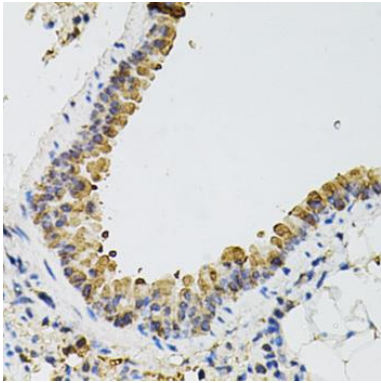
Immunogen:

Recombinant fusion protein containing a sequence corresponding to amino acids 1-350 of human ARHGEF2 (NP_004714.2).

Storage:

Store at -20°C. Avoid freeze / thaw cycles. Buffer: PBS with 0.02% sodium azide, 50% glycerol, pH7.3.

Product Images



Immunohistochemistry of paraffin-embedded mouse lung using ARHGEF2 antibody (CAB12547) at dilution of 1:100 (40x lens).