

USH1C Rabbit Polyclonal Antibody



CAB12556

Product Information

Size:

20uL, 50uL, 100uL, 200uL

Observed MW:

62kDa

Calculated MW:

45kDa/58kDa/60kDa/62kDa/
101kDa

Applications:

WB

Reactivity:

Human, Mouse, Rat

Protein Background

This gene encodes a scaffold protein that functions in the assembly of Usher protein complexes. The protein contains PDZ domains, a coiled-coil region with a bipartite nuclear localization signal and a PEST degradation sequence. Defects in this gene are the cause of Usher syndrome type 1C and non-syndromic sensorineural deafness autosomal recessive type 18. Multiple transcript variants encoding different isoforms have been found for this gene.

Immunogen information

Gene ID:

10083

Uniprot

Q9Y6N9

Synonyms:

USH1C; AIE-75; DFNB18; DFNB18A; NY-CO-37; NY-CO-38; PDZ-45;
PDZ-73; PDZ-73/NY-CO-38; PDZ73; PDZD7C; ush1cpst; harmonin

Antibody Information

Recommended dilutions:

WB 1:500 - 1:2000

Source:

Rabbit

Isotype:

IgG

Purification:

Affinity purification

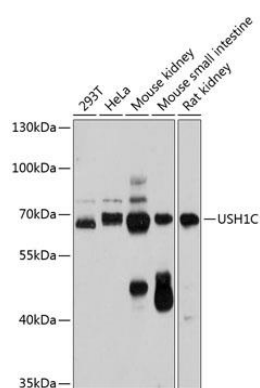
Immunogen:

Recombinant fusion protein containing a sequence corresponding to amino acids 264-533 of human USH1C (NP_001284693.1).

Storage:

Store at -20°C. Avoid freeze / thaw cycles. Buffer: PBS with 0.02% sodium azide, 50% glycerol, pH7.3.

Product Images



Western blot analysis of extracts of various cell lines, using USH1C antibody (CAB12556) at 1:1000 dilution. Secondary antibody: HRP Goat Anti-Rabbit IgG (H+L) (CABS014) at 1:10000 dilution. Lysates/proteins: 25ug per lane. Blocking buffer: 3% nonfat dry milk in TBST. Detection: ECL Basic Kit (CABM00020). Exposure time: 30s.