

# SLC25A13 Rabbit Polyclonal Antibody



CAB12557

## Product Information

### Size:

20uL, 50uL, 100uL, 200uL

### Observed MW:

74kDa

### Calculated MW:

74kDa

### Applications:

WB IHC IF

### Reactivity:

Human

## Protein Background

This gene is a member of the mitochondrial carrier family. The encoded protein contains four EF-hand Ca(2+) binding motifs in the N-terminal domain, and localizes to mitochondria. The protein catalyzes the exchange of aspartate for glutamate and a proton across the inner mitochondrial membrane, and is stimulated by calcium on the external side of the inner mitochondrial membrane. Mutations in this gene result in citrullinemia, type II. Multiple transcript variants encoding different isoforms have been found for this gene.

## Immunogen information

### Gene ID:

10165

### Uniprot

Q9UJS0

### Synonyms:

SLC25A13; ARALAR2; CITRIN; CTLN2

## Antibody Information

### Recommended dilutions:

WB 1:500 - 1:2000 IHC 1:50  
- 1:200 IF 1:50 - 1:200

### Source:

Rabbit

### Isotype:

IgG

### Purification:

Affinity purification

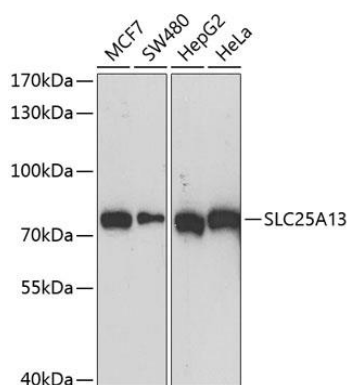
### Immunogen:

Recombinant fusion protein containing a sequence corresponding to amino acids 1-300 of human SLC25A13 (NP\_001153682.1).

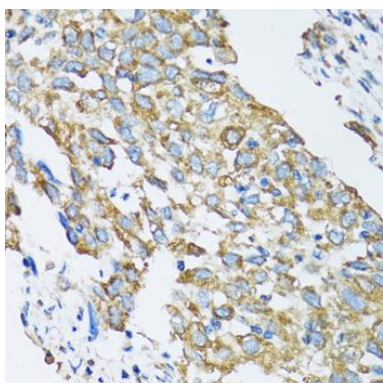
### Storage:

Store at -20°C. Avoid freeze / thaw cycles. Buffer: PBS with 0.02% sodium azide, 50% glycerol, pH7.3.

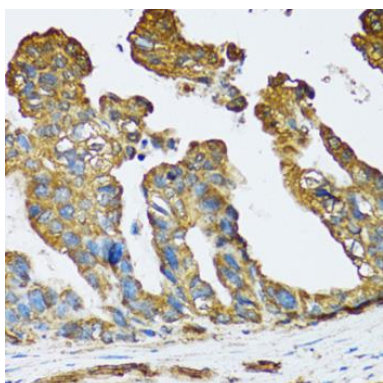
## Product Images



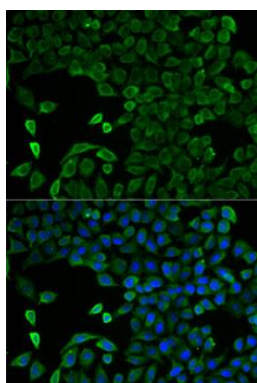
Western blot analysis of extracts of various cell lines, using SLC25A13 antibody (CAB12557) at 1:1000 dilution. Secondary antibody: HRP Goat Anti-Rabbit IgG (H+L) (CABS014) at 1:10000 dilution. Lysates/proteins: 25ug per lane. Blocking buffer: 3% nonfat dry milk in TBST. Detection: ECL Basic Kit (CABM00020). Exposure time: 90s.



Immunohistochemistry of paraffin-embedded human lung cancer using SLC25A13 antibody (CAB12557) at dilution of 1:100 (40x lens).



Immunohistochemistry of paraffin-embedded human colon carcinoma using SLC25A13 antibody (CAB12557) at dilution of 1:100 (40x lens).



Immunofluorescence analysis of U2OS cells using SLC25A13 antibody (CAB12557). Blue: DAPI for nuclear staining.