

# EMR1 Rabbit Polyclonal Antibody



CAB1256

---

## Product Information

### Size:

20uL, 50uL, 100uL, 200uL

### Observed MW:

160KDa

### Calculated MW:

78kDa/82kDa/90kDa/95kDa/  
97kDa

### Applications:

WB, IHC, IF

### Reactivity:

Human, Mouse, Rat

### Category:

Polyclonal Antibodies

## Protein Background

This gene encodes a protein that has a domain resembling seven transmembrane G protein-coupled hormone receptors (7TM receptors) at its C-terminus. The N-terminus of the encoded protein has six EGF-like modules, separated from the transmembrane segments by a serine/threonine-rich domain, a feature reminiscent of mucin-like, single-span, integral membrane glycoproteins with adhesive properties. Multiple alternatively spliced transcript variants encoding different isoforms have been found for this gene.

## Immunogen information

### Gene ID:

2015

### Uniprot

Q14246

### Synonyms:

ADGRE1; EMR1; TM7LN3; F4/80

### Immunogen:

Recombinant fusion protein containing a sequence corresponding to amino acids 21-290 of human EMR1 (NP\_001243182.1).

## Antibody Information

### Recommended dilutions:

WB 1:500 - 1:1000

IHC 1:50 - 1:200

IF 1:50 - 1:200

### Source:

Rabbit

### Isotype:

IgG

### Purification:

Affinity purification

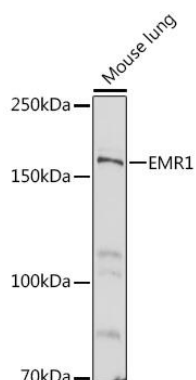
### Storage:

Store at -20°C. Avoid freeze / thaw cycles.

Buffer: PBS with 0.02% sodium azide, 50% glycerol, pH7.3.

## Product Images

---



Western blot analysis of extracts of Mouse lung, using EMR1 antibody (CAB1256) at 1:500 dilution.

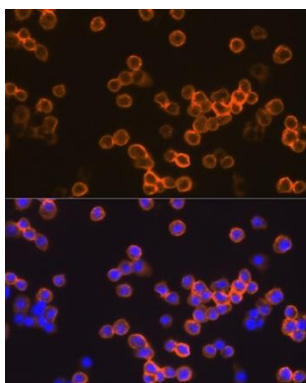
Secondary antibody: HRP Goat Anti-Rabbit IgG (H+L) (CABS014) at 1:10000 dilution.

Lysates/proteins: 25ug per lane.

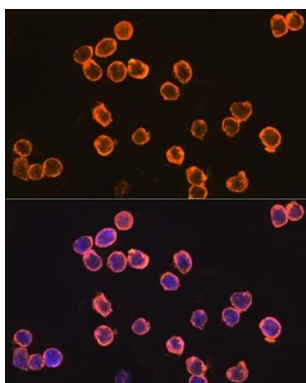
Blocking buffer: 3% non-fat dry milk in TBST.

Detection: ECL Basic Kit (AbGn00020).

Exposure time: 60s.



Immunofluorescence analysis of Raw264.7 cells using EMR1 Rabbit pAb (CAB1256) at dilution of 1:100 (40x lens). Blue: DAPI for nuclear staining.



Immunofluorescence analysis of THP-1 cells using EMR1 Rabbit pAb (CAB1256) at dilution of 1:100 (40x lens). Blue: DAPI for nuclear staining.