

# IKKGamma Rabbit Polyclonal Antibody



CAB12561

## Product Information

### Size:

20uL, 50uL, 100uL, 200uL

### Observed MW:

### Calculated MW:

36kDa/48kDa/55kDa

### Applications:

IHC

### Reactivity:

Rat

## Antibody Information

### Recommended dilutions:

IHC 1:50 - 1:100

### Source:

Rabbit

### Isotype:

IgG

### Purification:

Affinity purification

## Protein Background

This gene encodes the regulatory subunit of the inhibitor of kappaB kinase (IKK) complex, which activates NF-kappaB resulting in activation of genes involved in inflammation, immunity, cell survival, and other pathways. Mutations in this gene result in incontinentia pigmenti, hypohidrotic ectodermal dysplasia, and several other types of immunodeficiencies. A pseudogene highly similar to this locus is located in an adjacent region of the X chromosome.

## Immunogen information

### Gene ID:

8517

### Uniprot

Q9Y6K9

### Synonyms:

IKBKG; AMCBX1; FIP-3; FIP3; Fip3p; IKK-gamma; IKKAP1; IKKG; IMD33; IP; IP1; IP2; IPD2; NEMO; ZC2HC9

### Immunogen:

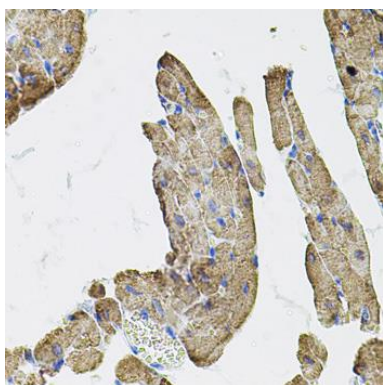
A synthetic peptide corresponding to a sequence within amino acids 40-140 of human IKKGamma (NP\_003630.1).

### Storage:

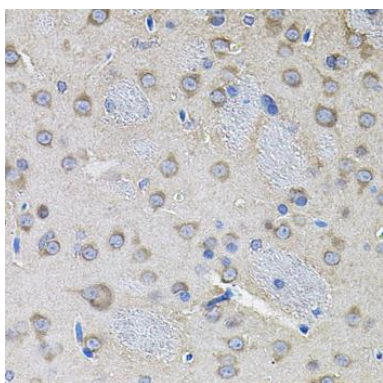
Store at -20°C. Avoid freeze / thaw cycles. Buffer: PBS with 0.02% sodium azide, 50% glycerol, pH7.3.

## Product Images

---



Immunohistochemistry of paraffin-embedded rat heart using IKKgamma antibody (CAB12561) (40x lens).



Immunohistochemistry of paraffin-embedded rat brain using IKKgamma antibody (CAB12561) (40x lens).