

RASSF1 Rabbit Polyclonal Antibody



CAB12567

Product Information

Size:

20uL, 50uL, 100uL, 200uL

Observed MW:

Calculated MW:

8kDa/9kDa/16kDa/21kDa/31kDa/38kDa/39kDa

Applications:

IHC IF

Reactivity:

Human, Mouse

Antibody Information

Recommended dilutions:

IHC 1:50 - 1:100 IF 1:50 - 1:100

Source:

Rabbit

Isotype:

IgG

Purification:

Affinity purification

Protein Background

This gene encodes a protein similar to the RAS effector proteins. Loss or altered expression of this gene has been associated with the pathogenesis of a variety of cancers, which suggests the tumor suppressor function of this gene. The inactivation of this gene was found to be correlated with the hypermethylation of its CpG-island promoter region. The encoded protein was found to interact with DNA repair protein XPA. The protein was also shown to inhibit the accumulation of cyclin D1, and thus induce cell cycle arrest. Several alternatively spliced transcript variants of this gene encoding distinct isoforms have been reported.

Immunogen information

Gene ID:

11186

Uniprot

Q9NS23

Synonyms:

RASSF1; 123F2; NORE2A; RASSF1A; RDA32; REH3P21

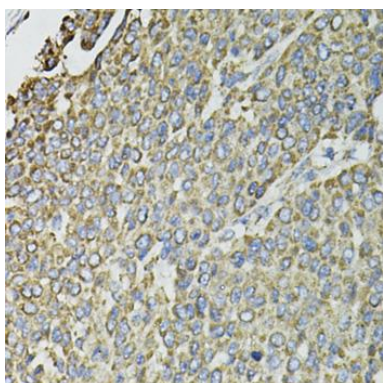
Immunogen:

Recombinant fusion protein containing a sequence corresponding to amino acids 101-340 of human RASSF1 (NP_009113.3).

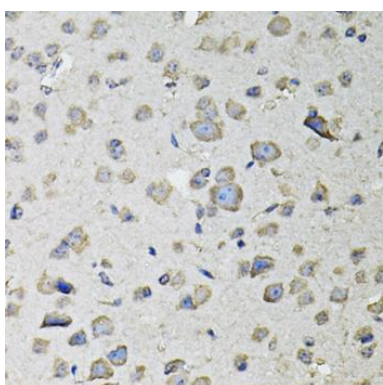
Storage:

Store at -20°C. Avoid freeze / thaw cycles. Buffer: PBS with 0.02% sodium azide, 50% glycerol, pH7.3.

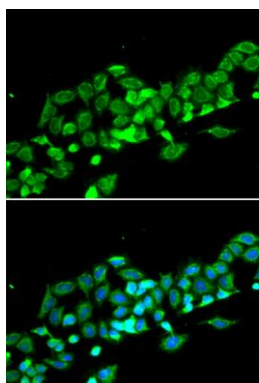
Product Images



Immunohistochemistry of paraffin-embedded human liver cancer using RASSF1 antibody (CAB12567) at dilution of 1:100 (40x lens).



Immunohistochemistry of paraffin-embedded mouse brain using RASSF1 antibody (CAB12567) at dilution of 1:100 (40x lens).



Immunofluorescence analysis of MCF-7 cells using RASSF1 antibody (CAB12567). Blue: DAPI for nuclear staining.