

# GABARAP Rabbit Polyclonal Antibody



CAB12568

## Product Information

### Size:

20uL, 50uL, 100uL, 200uL

### Observed MW:

14kDa

### Calculated MW:

13kDa

### Applications:

WB IHC

### Reactivity:

Human, Mouse, Rat

## Protein Background

Gamma-aminobutyric acid A receptors [GABA(A) receptors] are ligand-gated chloride channels that mediate inhibitory neurotransmission. This gene encodes GABA(A) receptor-associated protein, which is highly positively charged in its N-terminus and shares sequence similarity with light chain-3 of microtubule-associated proteins 1A and 1B. This protein clusters neurotransmitter receptors by mediating interaction with the cytoskeleton.

## Immunogen information

### Gene ID:

11337

### Uniprot

O95166

### Synonyms:

GABARAP; ATG8A; GABARAP-a; MM46

## Antibody Information

### Recommended dilutions:

WB 1:500 - 1:2000 IHC 1:50  
- 1:200

### Source:

Rabbit

### Isotype:

IgG

### Purification:

Affinity purification

### Immunogen:

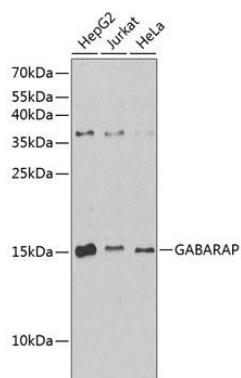
A synthetic peptide corresponding to a sequence within amino acids 1-100 of human GABARAP (NP\_009209.1).

### Storage:

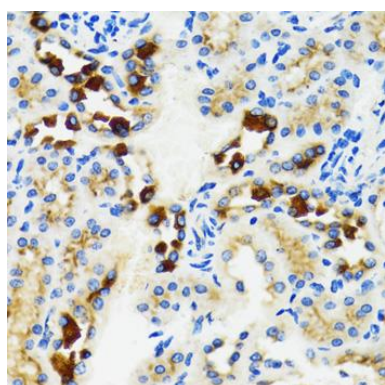
Store at -20°C. Avoid freeze / thaw cycles. Buffer: PBS with 0.02% sodium azide, 50% glycerol, pH7.3.

## Product Images

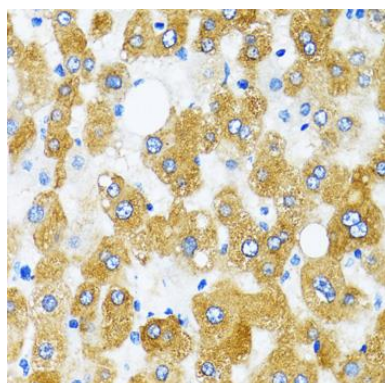
---



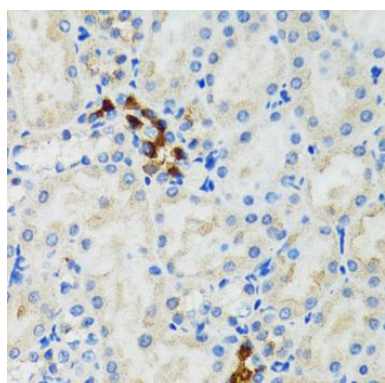
Western blot analysis of extracts of various cell lines, using GABARAP antibody (CAB12568) at 1:1000 dilution. Secondary antibody: HRP Goat Anti-Rabbit IgG (H+L) (CABS014) at 1:10000 dilution. Lysates/proteins: 25ug per lane. Blocking buffer: 3% nonfat dry milk in TBST. Detection: ECL Enhanced Kit (CABM00021). Exposure time: 90s.



Immunohistochemistry of paraffin-embedded rat kidney using GABARAP antibody (CAB12568) at dilution of 1:100 (40x lens).



Immunohistochemistry of paraffin-embedded human liver using GABARAP antibody (CAB12568) at dilution of 1:100 (40x lens).



Immunohistochemistry of paraffin-embedded mouse kidney using GABARAP antibody (CAB12568) at dilution of 1:100 (40x lens).