

# VASH1 Rabbit Polyclonal Antibody



CAB12569

---

## Product Information

### Size:

20uL, 50uL, 100uL, 200uL

### Observed MW:

41kDa

### Calculated MW:

21kDa/40kDa

### Applications:

WB IHC

### Reactivity:

Human, Mouse

## Antibody Information

### Recommended dilutions:

WB 1:500 - 1:2000 IHC 1:50  
- 1:200

### Source:

Rabbit

### Isotype:

IgG

### Purification:

Affinity purification

## Protein Background

### Immunogen information

#### Gene ID:

22846

#### Uniprot

Q7L8A9

#### Synonyms:

VASH1; KIAA1036

#### Immunogen:

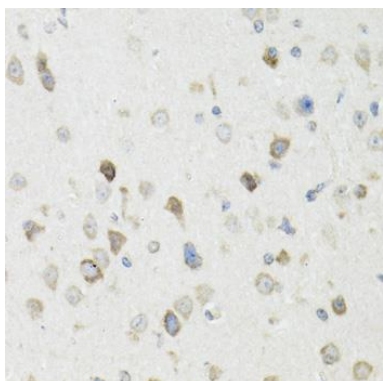
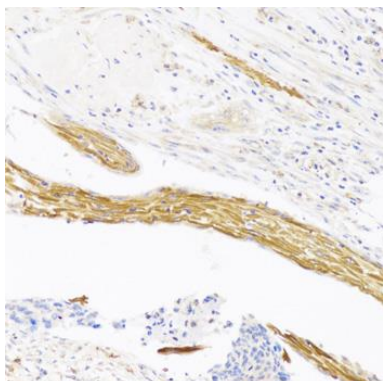
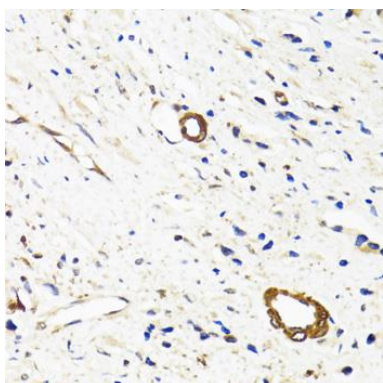
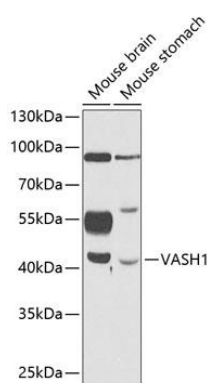
Recombinant fusion protein containing a sequence corresponding to amino acids 1-365 of human VASH1 (NP\_055724.1).

#### Storage:

Store at -20°C. Avoid freeze / thaw cycles. Buffer: PBS with 0.02% sodium azide, 50% glycerol, pH7.3.

## Product Images

---



Western blot analysis of extracts of various cell lines, using VASH1 antibody (CAB12569) at 1:1000 dilution. Secondary antibody: HRP Goat Anti-Rabbit IgG (H+L) (CABS014) at 1:10000 dilution. Lysates/proteins: 25ug per lane. Blocking buffer: 3% nonfat dry milk in TBST.

Immunohistochemistry of paraffin-embedded human prostate cancer using VASH1 antibody (CAB12569) at dilution of 1:100 (40x lens).

Immunohistochemistry of paraffin-embedded human esophageal cancer using VASH1 antibody (CAB12569) at dilution of 1:100 (20x lens).

Immunohistochemistry of paraffin-embedded mouse brain using VASH1 antibody (CAB12569) at dilution of 1:100 (40x lens).