

TOPBP1 Rabbit Polyclonal Antibody



CAB12574

Product Information

Size:

20uL, 50uL, 100uL, 200uL

Observed MW:

171kDa

Calculated MW:

170kDa

Applications:

WB IHC

Reactivity:

Human, Mouse, Rat

Protein Background

This gene encodes a binding protein which interacts with the C-terminal region of topoisomerase II beta. This interaction suggests a supportive role for this protein in the catalytic reactions of topoisomerase II beta through transient breakages of DNA strands.

Immunogen information

Gene ID:

11073

Uniprot

Q92547

Synonyms:

TOPBP1; TOP2BP1

Antibody Information

Recommended dilutions:

WB 1:500 - 1:2000 IHC 1:50
- 1:200

Source:

Rabbit

Isotype:

IgG

Purification:

Affinity purification

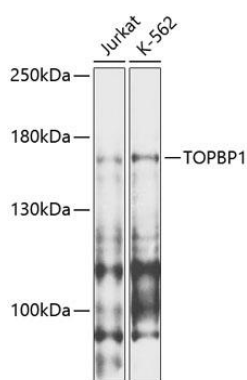
Immunogen:

A synthetic peptide corresponding to a sequence within amino acids 1-100 of human TOPBP1 (NP_008958.2).

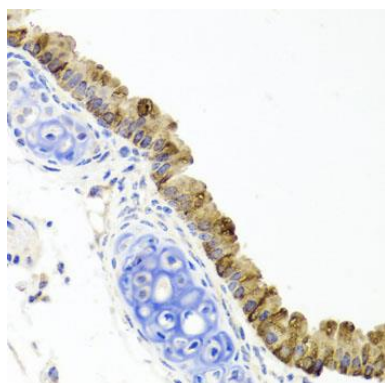
Storage:

Store at -20°C. Avoid freeze / thaw cycles. Buffer: PBS with 0.02% sodium azide, 50% glycerol, pH7.3.

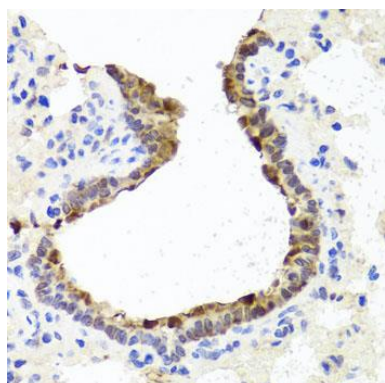
Product Images



Western blot analysis of extracts of various cell lines, using TOPBP1 antibody (CAB12574) at 1:1000 dilution. Secondary antibody: HRP Goat Anti-Rabbit IgG (H+L) (CABS014) at 1:10000 dilution. Lysates/proteins: 25ug per lane. Blocking buffer: 3% nonfat dry milk in TBST. Detection: ECL Enhanced Kit (CABM00021). Exposure time: 30s.



Immunohistochemistry of paraffin-embedded mouse lung using TOPBP1 antibody (CAB12574) at dilution of 1:100 (40x lens).



Immunohistochemistry of paraffin-embedded rat lung using TOPBP1 antibody (CAB12574) at dilution of 1:100 (40x lens).